



INTER-PACIFIC BAR ASSOCIATION

18TH ANNUAL CONFERENCE

APRIL 27 – APRIL 30, 2008

LOS ANGELES, CALIFORNIA, U.S.A.



MANY BORDERS. ONE WORLD.TM
REGISTRATION BROCHURE

WWW.IPBA2008.COM

MANY BORDERS. ONE WORLD.™

Different laws, different languages, different cultures, different ideas. And yet in the Internet age, consumers and businesses alike demand the ability to access whatever they want, whenever and wherever they want it. Across oceans and continents, business leaders and the attorneys who support them must strive to bridge all borders, tapping into worldwide resources and executing seamless business processes in order to succeed in the global economy.

The IPBA 2008 Annual Conference in Los Angeles will help business attorneys — and through them, their clients — navigate the vast and fluid waters of Asia-Pacific-related business law, turning obstacles into opportunities at the lightning-quick speed of the 21st century.

TABLE OF CONTENTS

Section	Page
Host Committee	1
About the IPBA	2-3
Welcome Messages	4-5
Conference Schedule at a Glance	6-9
Delegate Educational Program	10-20
Sponsors	21
Social Program	22
Friends of the IPBA	23
Accompanying Person and Pre/Post Conference Program	24-27
Media/Association Partners	27
Registration, Hotel, and General Travel Information	28-31
Sponsor and Exhibitor Opportunities	32-33
Speaker Profiles	34-56
Registration Form	57-60

CONFERENCE EXECUTIVE PRODUCER



Tracy E. Kwiker
President
Pivotal Events, Inc.
Email: info@pivotalevents.com
Website: www.pivotalevents.com

CONFERENCE CONTACT INFORMATION

IPBA 2008 Annual Conference
10920 Wilshire Boulevard, Suite 150-9128
Los Angeles, CA 90024
United States of America
T. +1.310.478.0170
F. +1.310.474.7687
Email: info@ipba2008.com
Website: www.ipba2008.com

CONFERENCE TERMS AND CONDITIONS

By registering for the IPBA 2008 Annual Conference, you acknowledge that neither the IPBA, IPBA 2008 Annual Conference, Inc., nor Pivotal Events, Inc. is liable for any personal injury or damage to or loss of personal property suffered or incurred before, during, or after the Conference.

HOST COMMITTEE

The IPBA 2008 Annual Conference gratefully acknowledges the support of its Host Committee.

CONFERENCE CHAIR

Gerold W. Libby
Holland & Knight LLP, Los Angeles

HOST COMMITTEE

Thomas E. McLain
Arnold & Porter LLP, Los Angeles

Gerald A. Sumida
Carlsmith Ball LLP, Honolulu

Nelson G. Dong
Dorsey & Whitney LLP, Seattle

Richard W. Lasater II
Foley & Lardner LLP, Los Angeles

Tim Bruinsma
Fulbright & Jaworski LLP, Los Angeles

Peter Ziegler
Gibson Dunn & Crutcher LLP, Los Angeles

Alan Fujimoto
Goodsill Anderson Quinn & Stifel LLP
Honolulu

John Zhang
Greenberg Traurig, LLP, Los Angeles

Wilson Chu
Haynes and Boone LLP, Dallas

Adam C. Ritter
Holland & Knight LLP, Los Angeles

José Rosell
Hughes Hubbard & Reed LLP, Paris

Elwood Lui
Jones Day, Los Angeles

Michael Fernhoff
Kaye Scholer LLP, Los Angeles

Brent Caslin
Kirkland & Ellis LLP, Los Angeles

Richard L. Wirthlin
Latham & Watkins LLP, Los Angeles

Teri T. Pham
Liner Yankelevitz Sunshine &
Regenstreif LLP, Los Angeles

Stephen Marsh
Luce, Forward, Hamilton & Scripps LLP
San Diego

Mike Margolis
Margolis & Tisman LLP, Los Angeles

Mark Mihanovic
McDermott Will & Emery LLP, Los Angeles

Theodore J. Roper
McGuireWoods, LLP, Los Angeles

Kenneth Kallish
Meritas Law Firms Worldwide

Cedric Chao
Morrison & Foerster LLP, San Francisco

Ann Miller
Nixon Peabody LLP, San Francisco

Yuji Iwanaga
Pillsbury Winthrop Shaw Pittman LLP
Los Angeles

John Iino
Reed Smith LLP, Los Angeles

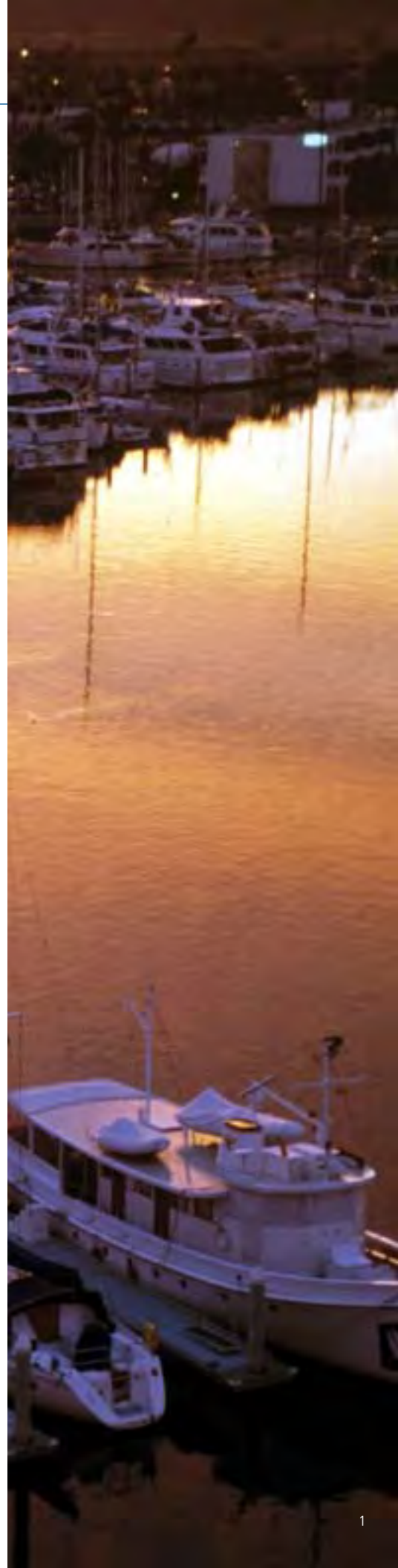
Michael V. Gisser
Skadden, Arps, Slate, Meagher &
Flom LLP, Los Angeles

Harumi Hata
Sonnenschein Nath & Rosenthal LLP
Los Angeles

Thomas T. Liu
Squire, Sanders & Dempsey L.L.P.
Los Angeles

Daniel Rozansky
Stroock & Stroock & Lavan LLP
Los Angeles

Patrick S. Brown
Sullivan & Cromwell LLP, Los Angeles



ABOUT THE IPBA

OFFICERS

President

Zongze Gao

King & Wood PRC Lawyers, Beijing

President-Elect

Gerold W. Libby

Holland & Knight LLP, Los Angeles

Vice President

Rafael A. Morales

SyCip Salazar Hernandez & Gatmaitan,

Makati City

Secretary-General

Arthur Loke

Arthur Loke & Partners, Singapore

Deputy Secretary-General

Gerald A. Sumida

Carlsmith Ball LLP, Honolulu

Program Coordinator

José Rosell

Hughes Hubbard & Reed LLP, Paris

Deputy Program Coordinator

Kevin Y. Qian

MWE China Law Offices, Shanghai Pudong

New Area

Committee Coordinator

Cedric Chao

Morrison & Foerster LLP, San Francisco

Deputy Committee Coordinator

Urs Lustenberger

Lustenberger Glaus & Partner, Zurich

Membership Committee Chair

Suet-Fern Lee

Stamford Law Corporation, Singapore

Membership Committee Vice-Chair

David A. Laverty

International Counsel, Chicago

Publications Committee Chair

Hiroyuki Kamano

Kamano Sogo Law Offices, Tokyo

Publications Committee Vice-Chair

Kap-You (Kevin) Kim

Bae, Kim & Lee LLC, Seoul

PAST PRESIDENTS

James McH. FitzSimons (2006-2007)

Clayton Utz, Sydney

Felix O. Soebagjo (2005-2006)

Soebagjo, Jatim, Djarot, Jakarta

Sang-Kyu Rhi (2004-2005)

Rhi & Partners, Seoul

Ravinder Nath (2003-2004)

Rajinder Narain & Co., New Delhi

Vivien Chan (2002-2003)

Vivien Chan & Co., Hong Kong

Nobuo Miyake (2001-2002)

Miyake & Yamazaki, Tokyo

John W. Craig (2000-2001)

McMillan Binch Mendelsohn LLP, Toronto

Dej-Udom Krairit (1999-2000)

Dej-Udom & Associates Ltd., Bangkok

Hon Justice Susan Glazebrook (1998-1999)

Court of Appeal, Wellington

Cecil Abraham (1997-1998)

Zul Rafique & Partners, Negeri Sembilan

Teodoro D. Regala (1996-1997)

Angara Abello Concepcion Regala & Cruz

(ACCRALAW), Makati City

Carl E. Anduri, Jr. (1995-1996)

Lex Mundi, Lafayette

Pathmanaban Selvadurai (1994-1995)

Rodyk & Davidson, Singapore

Ming-Sheng Lin (deceased) (1993-1994)

TIPLo Attorneys-at-Law, Taipei

Richard James Marshall (1992-1993)

Glencore International AG, Baar

Kunio Hamada (1991-1992)

Mori Hamada & Matsumoto, Tokyo

JURISDICTIONAL COUNCIL MEMBERS

Australia

David Laidlaw

Maddocks, Melbourne

Canada

William A. Scott

Stikeman Elliott LLP, Toronto

China

Xiumei Feng

All China Lawyers Association, Beijing

France

Jean-Claude Beaujour

Hobson, Paris

Germany

Axel Reeg

Reeg Rechtsanwälte, Mannheim

Hong Kong

Allan Leung

Lovells, Hong Kong

India

Krishan Singhania

Singhania & Co., Mumbai

Indonesia

Ira A. Eddymurthy

Soewito Suhardiman Eddymurthy Kardono,

Jakarta

Japan

Hisashi Hara

Nagashima Ohno & Tsunematsu, Tokyo

Korea

Young-Moo Shin

Shin & Kim, Seoul

Malaysia

Datuk Abdul Raman Bin Saad

Abdul Raman Saad & Associates,

Kuala Lumpur

New Zealand

Denis Michael McNamara

Simpson Grierson, Auckland

Philippines

Ma. Melva E. Valdez
JGLaw (Jimenez Gonzales Liwanag Bello
Valdez Caluya & Fernandez), Makati City

Singapore

Kim Teck Kim Seah
A. Ang, Seah & Hoe, Singapore

Sri Lanka

Nimal Weeraratne
Varners, Colombo

Switzerland

Douglas C. Hornung
Hornung & Partners, Geneva

Thailand

Suchart Thammakitagkul
Somnuk & Sutee Advocates & Solicitors,
Bangkok

United Kingdom

Richard Andrew Shadbolt
Shadbolt & Co LLP, Reigate

United States

Ann G. Miller
Nixon Peabody LLP, San Francisco

AT-LARGE COUNCIL MEMBERS

Chile and South America

Jaime Irrarázabal
Philippi, Yrarrázaval, Pulido & Brunner,
Santiago

China

Hongjiu Zhang
Jingtian & Gongcheng Attorneys at Law,
Beijing

Hawaii and South Pacific Islands

Lawrence C. Foster
Zhong Lun Law Firm, Shanghai

Osaka

Masatoshi Ohara
Kikkawa Law Offices, Osaka

Philippines

Valeriano R. Del Rosario
Del Rosario Bagamasbad & Raboca,
Makati City

WEBMASTER

Joyce A. Tan
Joyce A. Tan & Partners, Singapore

REGIONAL COORDINATORS

Europe

Patrick Philip Sherrington
Lovells, London

Asia-Pacific

Robin Joseph Lonergan
Macrossans Lawyers, Brisbane

COMMITTEE CHAIRS

Aerospace Law

Atul Y. Chitale
A. Y. Chitale & Associates, Advocates
& Legal Consultants, New Delhi

Banking, Finance, and Securities

Gerhard Wegen
Gleiss Lutz, Stuttgart

Corporate Counsel

Mitsuru Claire Chino
Itochu Corporation, Tokyo

Cross-Border Investment

Roger Saxton
Nash O'Neill Tomko Lawyers, Sydney

Dispute Resolution and Arbitration

Christopher To
Hong Kong International Arbitration Centre
(HKIAC), Hong Kong

Employment and Immigration Law

Akshay Jaitly
Trilegal, New Delhi

Energy and Natural Resources

Ignatius Hwang
Freehills, Singapore

Environmental Law

Brad Wylynko
Clayton Utz, Perth

Insolvency

Patrick Shea
Gowling Lafleur Henderson LLP, Toronto

Insurance

Dhinesh Bhaskaran
Shearn Delamore & Co., Kuala Lumpur

Intellectual Property

Jihn U. Rhi
Rhi & Partners, Seoul
Bert Oosting
Lovells, Amsterdam

International Construction Projects

Mohan Reviendran Pillay
MPillay Advocates & Solicitors, Singapore

International Trade

Cliff Sosnow
Blake, Cassels & Graydon LLP, Ottawa

Legal Practice

Robert Wai Quon
Fasken Martineau DuMoulin LLP, Vancouver

Maritime Law

Alec James Emmerson
Clyde & Co Middle East Regional Office,
Dubai

Tax Law

Ada Ko
Lane Powell PC, Seattle

Technology and Communications

Dennis Unkovic
Meyer, Unkovic & Scott LLP, Pittsburgh

Women Business Lawyers

Varya Simpson
Sonnenschein Nath & Rosenthal LLP,
San Francisco

IPBA SECRETARIAT

Roppongi Hills North Tower 7F
6-2-31 Roppongi, Minato-ku, Tokyo
106-0032 Japan
T. +1.81.3.5786.6796
F. +1.81.3.5786.6778
Email: ipba@tga.co.jp
Website: www.ipba.org

WELCOME MESSAGES



Zongze Gao
IPBA President

MESSAGE FROM THE PRESIDENT OF THE IPBA

It is a great honor and pleasure to invite you to attend the 18th Annual Conference of the Inter-Pacific Bar Association, to be held in Los Angeles, California, from April 27 to April 30, 2008.

Los Angeles is, as you know, renowned everywhere for its world-class entertainment and cultural attractions. Further, as the largest city on the west coast of the United States, it is the primary focal point for trade and investment between the United States and Asia. It is also home to the largest concentration of lawyers in the United States outside New York City, including thousands of Asian-American lawyers.

Our Los Angeles Host Committee, chaired by IPBA President-Elect Gerold W. Libby, has worked tirelessly to provide our 2008 Annual Conference delegates and accompanying persons educational and social programs of the highest order. The 2008 Annual Conference will feature a substantive opening ceremony and plenary session, more than 35 educational programs organized by IPBA committees, spectacular social events at the Getty Center and Sony Pictures Studios, and the traditional IPBA golf tournament.

I believe the 2008 Annual Conference will offer IPBA members an unsurpassed opportunity to learn about legal developments in the Asia-Pacific region, to develop and enhance professional relationships, and to enjoy the traditional collegial friendship that is the hallmark of the IPBA.

I look forward to welcoming you to the IPBA 2008 Annual Conference in Los Angeles!

A handwritten signature in blue ink, appearing to read "Gao Zongze".

Zongze Gao
IPBA President



Gerold W. Libby
IPBA 2008 Annual
Conference Chair

MESSAGE FROM THE CHAIR OF THE IPBA 2008 ANNUAL CONFERENCE

I am pleased to invite you to attend the 18th Annual Conference of the Inter-Pacific Bar Association, to be held in Los Angeles, California, in April 2008.

An IPBA Annual Conference is an unsurpassed opportunity for business lawyers throughout the Asia-Pacific region to remain current as to developments in business law and practice in the region, and to expand their networks of professional relationships. The 2008 Annual Conference will be no exception. Educational programs at the Conference will include more than 35 programs by the IPBA's 19 substantive law committees, which Conference attendees should find intellectually stimulating and relevant to their individual practices. And our social programs, including a gala at the world-famous Getty Center and an "IPBA in Hollywood" evening at Sony Pictures Studios, promise to be ideal for enjoying traditional IPBA friendship and hospitality.

Los Angeles is one of the world's most exciting and dynamic cities. It is the largest business center on the west coast of North America. Its ports are the busiest in the United States, and Southern California is home to more Asian-invested business enterprises than any other region in the western hemisphere. The IPBA 2008 Annual Conference, the first time an IPBA Annual Conference will be held in the United States in more than 10 years, will be an ideal way to learn more about why many in the United States and elsewhere consider Los Angeles the gateway to Asia.

I look forward to seeing you in Los Angeles in April.

A handwritten signature in blue ink, appearing to read "Gerold W. Libby".

Gerold W. Libby
IPBA 2008 Annual Conference Chair

MESSAGE FROM THE MAYOR OF THE CITY OF LOS ANGELES

On behalf of the City of Los Angeles, it is my pleasure to welcome the members and guests of the Inter-Pacific Bar Association on the occasion of its 18th Annual Conference. I am sure that you will find L.A. the ideal setting for your conference.

Los Angeles is the premier gateway for Asian trade into the United States. Our city stands at the global economic crossroads of the Pacific Rim, Latin America, and the great consumer markets of North America. Many of the toughest questions with respect to business and trade across the Pacific are asked and answered right here in L.A.

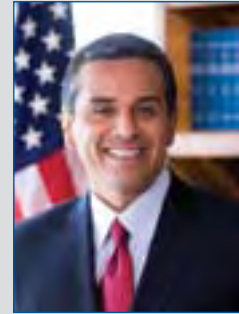
We are more than just a city at the heart of international commerce. Los Angeles continues to thrive as a dynamic center of cultural diversity, creative and entrepreneurial spirit, and geographic splendor. Our creative industries foster the passion, innovation, optimism, and expertise that drive our regional economy and, more importantly, provide a blueprint for the future.

I hope that you will take advantage of all Los Angeles has to offer. And I extend to you my best wishes for a memorable event.

Very truly yours,



Antonio R. Villaraigosa
Mayor



Antonio R. Villaraigosa
Mayor of the City of
Los Angeles

MESSAGE FROM THE GOVERNOR OF CALIFORNIA

Greetings to all who are planning to attend your 18th Annual Conference, "Many Borders. One World."

For the first time in more than 10 years, this conference will be held in the United States, and California is honored to host this gathering of business lawyers from the Asia-Pacific region. I am certain your time in the Golden State will be very rewarding and help you uphold and strengthen justice in your own communities.

This conference will also give you fantastic opportunities to explore the many wonderful attractions our state has to offer. Sun-soaked beaches, world-class shopping, and awesome entertainment and sports experiences all await your arrival. And after spending a few days in Southern California, don't be surprised to find yourself saying, "I'll be back."

Please accept my best wishes for your success, and California hopes to see you soon.

Sincerely,



Arnold Schwarzenegger
Governor



Arnold Schwarzenegger
Governor of California

CONFERENCE SCHEDULE AT A GLANCE

Saturday, April 26, 2008		
8:00 AM – 5:00 PM	IPBA Council and Officer Meetings	
Sunday, April 27, 2008		
9:00 AM – 4:00 PM	IPBA Council and Officer Meetings	
4:00 PM – 5:00 PM	Scholars / New Members / Women Business Lawyers Receptions	
5:00 PM – 7:00 PM	Welcome Cocktail Reception	
Monday, April 28, 2008		
8:00 AM – 9:00 AM	Breakfast	
9:00 AM – 12:00 PM	Plenary Session: Welcome Address, Keynote Presentation, and Plenary Panel	
12:00 PM – 1:15 PM	Lunch / Committee Meetings	
1:15 PM – 2:45 PM	Go West, Good Investor, Go West...to the West Coast [Part 1] Cross-Border Investment	Getting into Business in China: Legal Issues in Establishing Business Entities Insurance
2:45 PM – 3:15 PM	Break	
3:15 PM – 4:45 PM	Go West, Good Investor, Go West...to the West Coast [Part 2] Cross-Border Investment	Getting Out of Trouble in China: Effective Legal Solutions for Major Business Disputes Dispute Resolution and Arbitration Insurance
7:00 PM – 10:30 PM	Getty Center Gala (6:00 PM Departure from the Hyatt Regency Century Plaza)	
Tuesday, April 29, 2008		
8:00 AM – 9:00 AM	Breakfast / Committee Meetings	
9:00 AM – 10:30 AM	M&A Execution in China: What Every Deal Team Needs to Know Cross-Border Investment	Crossing the Divide: Current Trends in International Licensing Intellectual Property
10:30 AM – 11:00 AM	Break	
11:00 AM – 12:30 PM	M&A Due Diligence in Asia: Trends and Strategies Cross-Border Investment	Representing Asian Clients in High-Stakes U.S. Jury Trials Dispute Resolution and Arbitration
12:30 PM – 1:45 PM	Lunch / Committee Meetings	

Expediting the Dispute Resolution Process in Major Construction Projects <i>Dispute Resolution and Arbitration</i> <i>International Construction Projects</i>	The Historic Cape Town Treaty and Its Implications in Aircraft Financing <i>Aerospace Law</i> <i>Banking, Finance, and Securities</i>	Maritime Law: A Mock Mediation Presented in Cooperation with the International Bar Association (IBA) <i>Maritime Law</i>
Microfinance: Moving Beyond Philanthropy <i>Legal Development and Training</i>	Living with Emboldened Tax Authorities: International Trends in Tax Investigations and Audits <i>Tax Law</i>	Asia-Pacific Antitrust Law: Redefining the Rules of Engagement Presented in Cooperation with the Sections of International and Antitrust Law of the American Bar Association (ABA)
Emissions Trading: We're Getting Warmer <i>Banking, Finance, and Securities</i> <i>Energy and Natural Resources</i> <i>Environmental Law</i>	The Quest for Work-Life Balance in Legal Practice: The Essential Challenge and the Path to Integration [Part 1] <i>Women Business Lawyers</i>	The Evolving Balance of Trade and Its Effect on World Shipping and the Practice of Maritime Law <i>Maritime Law</i>
Large-Scale Railway Projects: Mitigating the Risks <i>International Construction Projects</i>	The Quest for Work-Life Balance in Legal Practice: The Essential Challenge and the Path to Integration [Part 2] <i>Women Business Lawyers</i>	Globalization and the Transformation of the Legal Profession in Asia: Cause or Effect? <i>Legal Practice</i>

CONFERENCE SCHEDULE AT A GLANCE

Tuesday, April 29, 2008 <i>(continued)</i>		
1:45 PM – 3:15 PM	Using Trade Agreements to Do Business in Brazil, Chile, and Mexico: A Latin American Approach <i>International Trade</i>	Collapsing Boundaries: Technology, Communications, and Entertainment Delivery [Part 1] <i>Intellectual Property</i> <i>Technology and Communications</i>
3:15 PM – 3:45 PM	Break	
3:45 PM – 5:15 PM	Bilateral Investment Treaties: Lessons Learned from the Latin American Experience <i>Cross-Border Investment</i> <i>Dispute Resolution and Arbitration</i> <i>International Trade</i>	Collapsing Boundaries: Technology, Communications, and Entertainment Delivery [Part 2] <i>Intellectual Property</i> <i>Technology and Communications</i>
7:30 PM – 11:00 PM	Sony Studios Farewell Gala (6:30 PM Departure from the Hyatt Regency Century Plaza)	

Wednesday, April 30, 2008		
8:00 AM – 9:00 AM	Breakfast	
9:00 AM – 10:30 AM	The Global Investment Race for Energy and Resources [Part 1] <i>Cross-Border Investment</i> <i>Energy and Natural Resources</i>	Filling the Pipeline: Cutting-Edge Techniques for Getting and Keeping Your Clients [Part 1] <i>Legal Development and Training</i>
10:30 AM – 11:00 AM	Break	
11:00 AM – 12:30 PM	The Global Investment Race for Energy and Resources [Part 2] <i>Cross-Border Investment</i> <i>Energy and Natural Resources</i>	Filling the Pipeline: Cutting-Edge Techniques for Getting and Keeping Your Clients [Part 2] <i>Legal Development and Training</i>
12:30 PM – 1:30 PM	Lunch	
1:30 PM – 3:00 PM	Corporate Counsel Forum <i>Presented in Cooperation with the Association of Corporate Counsel (ACC)</i>	
3:00 PM – 4:00 PM	Annual General Meeting	
4:00 PM – 5:30 PM	Host Committee Firm Receptions	

Thursday, May 1, 2008	
8:00 AM – 3:00 PM	Annual IPBA Golf Tournament at Trump National Golf Club <i>(6:00 AM Departure from the Hyatt Regency Century Plaza)</i>

The Rise of Islamic Finance Banking, Finance, and Securities	Tax Equalization Policies and Benefits Affecting Today's Global Executive Tax Law	Balancing Interests: Insolvency Reform in the Asia-Pacific Region [Part 1] Insolvency
Airport Infrastructure and the Aviation Industry: Tackling the Legal Issues Aerospace Law Environmental Law	Workers Without Borders: The Age of the Global Employee Employment and Immigration Law Tax Law	Balancing Interests: Insolvency Reform in the Asia-Pacific Region [Part 2] Insolvency
Raising Money in the Entertainment Industry: An Overview of Innovative Financing Vehicles Banking, Finance, and Securities Intellectual Property Tax Law	Dealing with a Failed International Construction Project: A Case Study Insolvency	
Raising Money in the Entertainment Industry: Intellectual Property Rights as Deal Collateral Banking, Finance, and Securities Intellectual Property Tax Law	Commercial Arbitration in Asia Today: Are the Courts Hands On or Hands Off? Dispute Resolution and Arbitration	Cross-Border Pollution: Critical Success Factors for Protecting Clients Environmental Law

Monday, April 28, 2008, 9:00 AM – 10:30 AM

WELCOME ADDRESS

Speakers:

Antonio R. Villaraigosa (Invited)

Mayor of the City of Los Angeles



The City of Los Angeles is the second largest city in the United States. The County of Los Angeles is larger in population than 42 of the 50 states of the United States and is home to 10 million people, one-quarter of all residents of California. Mayor Antonio Villaraigosa, the 41st mayor of the City of Los Angeles, will share his views regarding the increasingly important role played by the 1.4 million Asians and Asian Americans who live in Los Angeles County. He will also address recent developments in the major industries of Los Angeles County, including international trade, supported by the Ports of Los Angeles and Long Beach, motion picture and television program production, music recording and production, aerospace, and professional services.

Arnold Schwarzenegger (Invited)

Governor of California



California is the largest state of the United States by population and an economic powerhouse – the world's eighth largest economy if it were a separate nation. Many areas of California are invariably associated with world leadership in particular industries, including entertainment in Los Angeles, technology in Silicon Valley, and agriculture in the Central Valley. While California's role in trade with the Asia-Pacific region is also universally recognized, Governor Arnold Schwarzenegger will address how the influence of the Asia-Pacific region in California extends beyond the sphere of trade to virtually all sectors of society, including education, tourism, and the arts.

KEYNOTE PRESENTATION

Speaker:

Susan C. Schwab (Invited)

United States Trade Representative



Ambassador Susan Schwab was nominated to be United States Trade Representative by President George W. Bush on April 18, 2006, and was confirmed as USTR by the United States Senate on June 8, 2006. As USTR, Ambassador Schwab is a member of the President's Cabinet and serves as the President's principal trade advisor, negotiator, and spokesperson on trade issues.

Monday, April 28, 2008, 10:30 AM – 12:00 PM

MANY BORDERS. ONE WORLD.™ PLENARY PANEL

THE FUTURE OF THE ASIA-PACIFIC ECONOMY: NATIONAL COMPETITION VERSUS REGIONAL INTEGRATION?

Will globalization impel the Asia-Pacific region toward economic integration, or will the countries of the region pursue economic nationalism? Will the Association of Southeast Asian Nations (ASEAN) forge an effective common trade market? Will a self-sustaining Asian market ultimately decrease its trade dependence on the United States and Europe?

Globalization has transformed Asia in less than three decades into the world's most dynamic economic region, on the verge of becoming a self-sustaining regional economy. ASEAN's blueprint for an ASEAN Economic Community adopted in 2007 seemingly confirms this historic evolution. The trade effects of China's and India's exponentially expanding economies, the continuing maturation of the economies of Japan and the former Four Tigers, the proliferation of free trade agreements in the region that could compete with the multilateral trade regimes of APEC and WTO, all suggest that economic nationalism remains strong. Globalization has also spurred the partial transformation of state-owned enterprises into profit-driven multinational corporations that, together with newly emergent sovereign wealth funds with staggering financial resources, are new players in these regional and the global economies.

How will these historic developments shape the future of economic, trade, and investment relations within this region? Will they spur genuine regional cooperation, if not integration? Or will they spur increased national economic competition? The distinguished plenary panel of the IPBA 2008 Annual Conference will seek to provide insights into these issues and how they will impact what the future holds for this important region.

Moderator:

Alexander L. Cappello, Chairman and CEO

Cappello Capital Corp.



Alexander Cappello has led several public and private companies over the past 34 years, including Cappello Capital Corp. (Member NASD-SIPC), a global merchant bank whose principals have conducted in excess of US \$116 billion in transactions in over 50 countries. He served as the international chairman of the Young Presidents' Organization (YPO), helping found 52 new chapters, heavily focusing on Asia. Mr. Cappello is currently a trustee of the University of Southern California (USC), a director of the RAND Center for Middle East Public Policy and the RAND Center for Russia and Eurasia, the chairman of Inter-Tel (NASDAQ), and a director of California Republic Bank (the largest capitalized bank in California's history), and formerly a director of Intelligent Energy, PLC (London), Geothermal Resources Intl. (AMEX), Cytrx (NASDAQ), and Genius Products (NASDAQ).

Panelists:

Robert A. Eckert, Chairman of the Board and CEO
Mattel, Inc.



Robert Eckert is chairman of the board and chief executive officer of Mattel, Inc., the worldwide leader in the design, manufacture, and marketing of toys with approximately US \$5 billion in annual sales. Mr. Eckert joined Mattel in May 2000 from Kraft Foods, Inc., the largest U.S.-based packaged food company in the world. A 23-year veteran of Kraft, he most recently served as its president and chief executive officer, a position he had held since October 1997. In that role, he was responsible for overseeing all of Kraft's business units and for leading the company's policy decision-making board, the Operating Committee.

George Lee, Chairman, Founder, and Managing Member
PMK, Inc. and SView LLC



George Lee has been active in commercial enterprises throughout Asia for over 25 years and has been instrumental in the structuring of numerous cross-border transactions. Mr. Lee is the chairman of PMK, Inc., a consumer goods company based in Seoul, Korea, and the founder and managing member of SView LLC, an advanced mobile software company with operations around the world, especially Asia. Mr. Lee is also the founder of JPG, the first company to have an exclusive license from the governments of the United States and the Democratic People's Republic of Korea to conduct business between the two countries.

William H. Overholt, Director
RAND Center for Asia Pacific Policy



William Overholt holds the Asia Policy Research Chair at the RAND Center for Asia Pacific Policy and is director of the Center. He has long been an important analyst of Asia. Dr. Overholt is the author of *Asia, America and the Transformation of Geopolitics* (Cambridge University Press, 2007), as well as *The Rise of China* (W.W. Norton, 1993), which won the Mainichi News/Asian Affairs Research Center Special Book Prize.

Daniel Tsai, Chairman and CEO (Invited)
Fubon Financial Holding Co. Ltd.



Daniel Tsai is currently chairman of Fubon Financial Holding Co. Ltd. and vice chairman of Taiwan Mobile Co., Ltd. Mr. Tsai has extensive experience in banking and telecommunication services, as well as the land development, construction management, and building leasing business. He holds a Master of Law degree from Georgetown University and a Bachelor of Law degree from National Taiwan University.

Monday, April 28, 2008, 1:15 PM – 2:45 PM

GO WEST, GOOD INVESTOR, GO WEST...TO THE WEST COAST [PART 1]

The first session of this two-part panel will provide an overview of key Asian outbound investors and explore current investment trends, focusing particularly on investments in the western states and provinces of the United States and Canada.

Committee Sponsor:

Cross-Border Investment

Co-Moderators:

Ronald D. Husdon, Greenberg Traurig, LLP, United States
Roger S. Saxton, Nash O'Neill Tomko Lawyers, Australia

Panelists:

William Y. Chua, Sullivan & Cromwell LLP, Hong Kong
Atul Dua, Seth Dua & Associates, India
Masahisa Ikeda, Shearman & Sterling LLP, Japan
Cheryl Chengyu Luan, Lifang & Partners, China
Kevin McFarlane, Deloitte & Touche Corporate Finance LLC,
United States
Michael Paik, GlobalFluency Korea, Korea

GETTING INTO BUSINESS IN CHINA: LEGAL ISSUES IN ESTABLISHING BUSINESS ENTITIES

This panel will deal with the establishment of business entities in China, with specific focus on insurance entities. Topics will include business structures and risks, licensing, and regulatory issues.

Committee Sponsor:

Insurance

Moderator:

Angus Rodger, Steptoe & Johnson LLP, United Kingdom

Panelists:

Audrey Chen, Jun He Law Offices, China
Bjoern Etgen, Beiten Burkhardt, Hong Kong
Adam W. Schorr, Margolis & Tisman LLP, United States
Stuart Valentine, Mallesons Stephen Jaques, Hong Kong

DELEGATE EDUCATIONAL PROGRAM

EXPEDITING THE DISPUTE RESOLUTION PROCESS IN MAJOR CONSTRUCTION PROJECTS

This panel will delve into a critical examination of different models for expeditiously resolving construction disputes, analyzing how they work on a practical level as well as their chances of success. Panelists will provide an in-depth review of statutory adjudication, DRBs/DABs, expert determination, and the 100-day arbitration model pioneered by John Uff.

Committee Co-Sponsors:

Dispute Resolution and Arbitration
International Construction Projects

Co-Moderators:

Philip T. Nunn BBS JP, Fried, Frank, Harris, Shriver & Jacobson LLP,
Hong Kong
Mohanadass Kanagasabai, Shook Lin & Bok, Malaysia

Panelists:

John Bishop, Pinsent Masons, China
Philip L. Bruner, JAMS, United States
Paul Darling QC, Keating Chambers, United Kingdom
Sumeet Kachwaha, Kachwaha & Partners, India
Mark S. McKain, Bechtel Corporation, United States

THE HISTORIC CAPE TOWN TREATY AND ITS IMPLICATIONS IN AIRCRAFT FINANCING

Focusing on current trends in aircraft financing, this panel will explore in particular the advantages afforded to financiers after the ratification of the Aircraft Equipment Protocol at the historic 2001 Cape Town Convention, detailing what that protocol means to business attorneys and their clients today.

Committee Co-Sponsors:

Aerospace Law
Banking, Finance, and Securities

Moderator:

Atul Y. Chitale, A. Y. Chitale & Associates, Advocates & Legal
Consultants, India

Panelists:

R. Paul Barks, Kaye Scholer LLP, United States
Kevin A. Hall, Reed Smith LLP, United States
Hajime Ueno, Nishimura & Asahi, Japan
Enny Widhya, Mochtar Karuwin Komar, Indonesia

MARITIME LAW: A MOCK MEDIATION PRESENTED IN COOPERATION WITH THE INTERNATIONAL BAR ASSOCIATION (IBA)

When a U.S. warship collides with an oil-field service vessel owned and insured by a party outside of U.S. jurisdiction, several parties bring claims against the United States. Mock mediation participants will cite applicable laws and come up with a valid argument and a workable solution.

Committee Sponsor:

Maritime Law

Co-Moderators:

Alec Emmerson, Clyde & Co LLP, United Arab Emirates
Gregory W. Poulos, Cox, Wootton, Griffin, Hansen & Poulos, LLP,
United States

Participants:

Jonathan Ahn, Semmes Bowen & Semmes, PC, United States
Forrest Booth, Severson & Werson, United States
Valeriano R. del Rosario, Del Rosario Bagamasbad & Raboca,
Philippines
Charles S. Donovan, Sheppard Mullin Richter & Hampton LLP,
United States
Jeff Kichaven, JAMS, United States
Alexander S. Polsky, JAMS, United States
James J. Sentner, Jr., Gardere Wynne Sewell LLP, United States
Shuji Yamaguchi, Okabe & Yamaguchi, Japan
Jon W. Zinke, Keesal, Young & Logan, Hong Kong

Monday, April 28, 2008, 3:15 PM – 4:45 PM

GO WEST, GOOD INVESTOR, GO WEST...TO THE WEST COAST [PART 2]

The second session of this two-part panel will focus on investment strategies, procedures, and regulations affecting foreign investors in the western states and provinces of the United States and Canada, exploring such issues as asset acquisition, alternative investment vehicles, and best practices for investors.

Committee Sponsor:

Cross-Border Investment

Co-Moderators:

Ronald D. Husdon, Greenberg Traurig, LLP, United States
Roger S. Saxton, Nash O'Neill Tomko Lawyers, Australia

Panelists:

John Iino, Reed Smith LLP, United States
Kevin W. Keyes, Gowling Lafleur Henderson LLP, Canada
Kevin McFarlane, Deloitte & Touche Corporate Finance LLC,
United States
H. Gregory Nasky, Goodwill Anderson Quinn & Stifel LLP, United States
Shawn C. D. Neylan, Stikeman Elliott LLP, Canada

GETTING OUT OF TROUBLE IN CHINA: EFFECTIVE LEGAL SOLUTIONS FOR MAJOR BUSINESS DISPUTES

This panel will focus on the management of large, complex business disputes in China through court and arbitration proceedings, with specific reference to insurance claims and insured major business disputes.

Committee Co-Sponsors:

Dispute Resolution and Arbitration
Insurance

Moderator:

Denis Brock, Clifford Chance LLP, United Kingdom

Panelists:

Fred Hawke, Clayton Utz, Australia
John M. Huff, Swiss Re America, United States
Malcolm S. McNeil, Carlsmith Ball LLP, United States
Michael J. Moser, O'Melveny & Meyers LLP, Hong Kong
Steven A. Rosenthal, RGL Forensic Accountants and Consultants,
United States

MICROFINANCE: MOVING BEYOND PHILANTHROPY

Based in the desire to alleviate poverty, microfinance has evolved from a grassroots movement into a booming commercial industry. Panelists will compare and contrast the development of microfinance sectors cross-regionally and review the political, geographical, and legal challenges the industry faces globally.

Committee Sponsor:

Legal Development and Training

Moderator:

Terri Mottershead, Heller Ehrman LLP, United States

Panelists:

William Fitzpatrick, Omidyar Network, United States
Jami Hubbard, International Development Law Organization, Italy
April K. Rinne, Unitus, United States

LIVING WITH EMBOLDENED TAX AUTHORITIES: INTERNATIONAL TRENDS IN TAX INVESTIGATIONS AND AUDITS

Tax authorities in a number of Asia-Pacific countries have stepped up their information sharing, investigation, and auditing activities. In many jurisdictions, tax authorities have also exhibited a willingness to assert tax avoidance and to test their positions in court. This panel will highlight the issues that are currently of interest to tax authorities, and share practical methods of anticipating and managing tax risks associated with ordinary commercial activity.

Committee Sponsor:

Tax Law

Co-Moderators:

Michael Butler, Finlaysons, Australia
Neil Russ, Buddle Findlay, New Zealand

Panelists:

Pieter de Ridder, Loyens & Loeff, Singapore
Joseph Fletcher, Holland & Knight LLP, United States
Ian Gamble, Thorsteinssons LLP, Canada
Susumu Masuda, Mori Hamada & Matsumoto, Japan
Jay Shim, Yulchon Attorneys at Law, Korea
Sylvette Y. Tankiang, Villaraza & Angangco, Philippines

ASIA-PACIFIC ANTITRUST LAW: REDEFINING THE RULES OF ENGAGEMENT PRESENTED IN COOPERATION WITH THE SECTIONS OF INTERNATIONAL AND ANTITRUST LAW OF THE AMERICAN BAR ASSOCIATION (ABA)

This panel will review developments in competition law in key Asian jurisdictions including the enactment of the China Antimonopoly Law. As the first comprehensive competition statute in the PRC, the China Antimonopoly Law presents important questions and concerns related to the application of competition law during China's transition to a market economy. The panel will also address the amendments enacted in 2007 to India's Competition Law. Addressing the elements of the 2003 law ruled unconstitutional, these amendments herald an entirely new competition regime in India. Finally, the panel will highlight important recent decisions by the Japan Fair Trade Commission and the Korea Fair Trade Commission, particularly as they pertain to unilateral exploitative abuses and the proposed amendments to the Japan Antimonopoly Act.

Moderator:

Harumichi Uchida, Mori Hamada & Matsumoto, Japan

Panelists:

H. Stephen Harris, Jr., Alston & Bird LLP, United States
Youngjin Jung, Yulchon Attorneys at Law, Korea
Bruce Lloyd, Clayton Utz, Australia
Susan Ning, King & Wood PRC Lawyers, China

Tuesday, April 29, 2008, 9:00 AM – 10:30 AM

M&A EXECUTION IN CHINA: WHAT EVERY DEAL TEAM NEEDS TO KNOW

The M&A transaction process in China, from memo of understanding to contract signing through regulatory approval, is complex and multifaceted, and at some stages, lacks transparency. If any part of the deal team loses sight of its place in the process, the deal will fall apart. Building the right deal team and establishing clear roles and responsibilities is critical to success. This panel will explore the roles of local law firms, international law firms, and investment banks in the deal process and secrets to building a team that can successfully navigate the rapidly evolving issues of timing, structure, due diligence, and, most importantly, getting the deal closed.

Committee Sponsor:

Cross-Border Investment

Moderator:

Kevin Y. Qian, MWE China Law Offices, China

Panelists:

Michael G. DeSombre, Sullivan & Cromwell LLP, Hong Kong
Michael V. Gisser, Skadden, Arps, Slate, Meagher & Flom LLP, United States
Mark Mihanovic, McDermott Will & Emery LLP, United States
James Zukin, Houlihan Lokey Howard & Zukin, United States

CROSSING THE DIVIDE: CURRENT TRENDS IN INTERNATIONAL LICENSING

With an emphasis on intellectual property rights and current trends in licensing strategies and regimes, this panel will provide an in-depth look at everything from patent standards and pools, to cross-border cooperation among standards committees, to trademark and copyright licensing, to cross-border enforcement challenges and strategies.

Committee Sponsor:

Intellectual Property

Moderator:

Bert Oosting, Lovells LLP, Netherlands

Panelists:

Tim Bruinsma, Fulbright & Jaworski LLP, United States
Nelson G. Dong, Dorsey & Whitney LLP, United States
Boh Young Hwang, Bae, Kim & Lee LLC, Korea
Hideki Kojima, Kojima Law Offices, Japan
Harry Melkonian, Melkonian & Co., Australia

EMISSIONS TRADING: WE'RE GETTING WARMER

This panel will examine the trading opportunities that have been created for renewable energy credits and emission reduction units in key markets throughout Europe, Asia, and the Americas. In particular, the panel will address issues associated with the allocation, trading, and acquittal of such units.

Committee Co-Sponsors:

Banking, Finance, and Securities
Energy and Natural Resources
Environmental Law

Co-Moderators:

Stephen Marsh, Luce, Forward, Hamilton & Scripps LLP, United States
William A. Scott, Stikeman Elliott LLP, Canada

Panelists:

Jeffrey A. Chester, Kaye Scholer LLP, United States
Sam E. Headon, Stanford Program on Energy and Sustainable Development, United States
Catherine M. Krupka, McDermott Will & Emery LLP, United States
Jeffrey Layman, Milbank, Tweed, Hadley & McCloy LLP, Hong Kong

THE QUEST FOR WORK-LIFE BALANCE IN LEGAL PRACTICE: THE ESSENTIAL CHALLENGE AND THE PATH TO INTEGRATION [PART 1]

In this two-part interactive discussion, presenters and facilitators will share issues related to balancing work and personal life. The first part of this discussion will explore time and task management challenges, examining cultural differences and opposing perspectives. The second session will provide strategies, ideas, and best practices for integrating work and life in ways that achieve both personal satisfaction and professional success. The panel will also examine ways that law firms and in-house legal departments can support lawyers in their quest for flexibility.

Committee Sponsor:

Women Business Lawyers

Presenters:

Barbara Adachi, Deloitte Consulting LLP, United States
Susan G. Manch, Shannon & Manch, LLP, United States

Facilitators:

Juliet Blanch, McDermott Will & Emery LLP, United Kingdom
Jenny Kim, Miller & Chevalier Chartered, United States
Cherie S. Raidy, Foley & Lardner LLP, United States
Sitpah Selvaratnam, Tommy Thomas, Malaysia
Priti Suri, Priti Suri & Associates Legal Counsellors, India

THE EVOLVING BALANCE OF TRADE AND ITS EFFECT ON WORLD SHIPPING AND THE PRACTICE OF MARITIME LAW

Changes in the balance of world trade and the growth of China and other developing markets have had a great impact on traditional shipping law centers. Panelists will explore the latest trends in world shipping and the issues that have cropped up around them, such as nationalism versus internationalism, criminalization, and pollution.

Committee Sponsor:

Maritime Law

Moderator:

Alec Emmerson, Clyde & Co LLP, United Arab Emirates

Panelists:

Raymond J. Burke, Jr., Burke & Parsons, United States

Lindsay East, Reed Smith LLP, United Kingdom

Peter Murray, Ince & Co, China

Tuesday, April 29, 2008, 11:00 AM – 12:30 PM

M&A DUE DILIGENCE IN ASIA: TRENDS AND STRATEGIES

The authors of *International Mergers and Acquisitions Due Diligence*, co-published by the American Bar Association and the Inter-Pacific Bar Association, will highlight the most current trends in M&A due diligence practice in Asia. Panelists will present the key challenges facing international business lawyers, with a focus on duties to disclose and investigate; legal restrictions on M&A related disclosures that involve national security, economic espionage, customer privacy, and antitrust regulation issues; and the impact of buyers' knowledge on post-closing indemnification and other remedies.

Committee Sponsor:

Cross-Border Investment

Moderator:

Wilson Chu, Haynes and Boone LLP, United States

Panelists:

Rajarshi Chakrabarti, Kochhar & Co., India

Ira A. Eddymurthy, Soewito Suhardiman Eddymurthy Kardono, Indonesia

Robin Koh, Skrine & Co., Malaysia

Piyanuj Ratprasatporn, Tilleke & Gibbins International Ltd., Thailand

Eusebio V. Tan, Angara Abello Concepcion Regala & Cruz, Philippines

Sky Yang, Bae, Kim & Lee LLC, Korea

REPRESENTING ASIAN CLIENTS IN HIGH-STAKES U.S. JURY TRIALS

Foreign clients from civil law countries are often mystified by the U.S. adversarial system as well as by the U.S. court system's reliance on juries to determine the facts of a case. Foreign business people who consider the confrontation inherent in U.S. adversarial witness examinations impolite may respond appropriately according to their culture yet inappropriately in the eyes of a U.S. jury. Learn how to overcome cultural barriers to prepare clients for a high-stakes jury trial in this informative panel discussion, where experienced U.S. trial lawyers, corporate counsel, and a jury consultant will share practical advice.

Committee Sponsor:

Dispute Resolution and Arbitration

Moderator:

Cedric Chao, Morrison & Foerster LLP, United States

Panelists:

Judith Bain, Epson America, Inc., United States

Jeffrey S. Davidson, Kirkland & Ellis LLP, United States

Jo-Ellan Dimitrius, Dimitrius & Associates, United States

Sidney K. Kanazawa, McGuireWoods LLP, United States

Lisa M. Marchese, Dorsey & Whitney LLP, United States

LARGE-SCALE RAILWAY PROJECTS: MITIGATING THE RISKS

This session will explore risk management strategies for the construction and operation of mass transit and high-speed rail systems, both within cities and between them. Panelists will assess from the employer/government perspective the issues affecting rail investment and development, upgrading vs. the greenfield approach, project procurement and delivery models, risk analysis and allocation, and project management. From the contractor's perspective, panelists will explore preferred project procurement and delivery models, managing risks, dispute resolution models, and operations vs. construction issues.

Committee Sponsor:

International Construction Projects

Moderator:

Kris R. Nielsen, The Nielsen-Wurster Group, Inc., United States

Panelists:

David Bateson, Mallesons Stephen Jaques, Hong Kong

Marc Frilet, Frilet - Société d'Avocats, France

Doug Jones AM, Clayton Utz, Australia

Krishan Singhania, Singhania & Co., India

John B. Tieder, Watt, Tieder, Hoffar & Fitzgerald, L.L.P., United States

THE QUEST FOR WORK-LIFE BALANCE IN LEGAL PRACTICE: THE ESSENTIAL CHALLENGE AND THE PATH TO INTEGRATION [PART 2]

Please see Tuesday, April 29, 2008, 9:00 AM – 10:30 AM for a complete description and a list of speakers.

GLOBALIZATION AND THE TRANSFORMATION OF THE LEGAL PROFESSION IN ASIA: CAUSE OR EFFECT?

To meet the demands of a global economy, many Asian jurisdictions, as a matter of national policy, are taking significant measures to transform their legal systems. Many countries are changing the way they train, license, and regulate their lawyers. Some are establishing “western-style” law schools, forming cooperative relationships with western legal institutions, and creating continuing education programs for those in the legal profession. This panel will explore these trends in selected Asian jurisdictions, including China, India, and Japan, and assess the implications of these trends including the accelerating integration of today’s global economy.

Committee Sponsor:

Legal Practice

Moderator:

Robert W. Quon, Fasken Martineau DuMoulin LLP, Canada

Panelists:

Campbell Bridge SC, Maurice Byers Chambers, Australia
Hisashi Hara, Nagashima Ohno & Tsunematsu, Japan
Hee Chul Kang, Yulchon Attorneys at Law, Korea
Yabo Lin, Sonnenschein Nath & Rosenthal LLP, United States
Ravi Nath, Rajinder Narain & Co., India
Datuk Abdul Raman Din Saad, ARSA Lawyers (Abdul Raman Saad & Associates), Malaysia
Soon Moo Soh, Yulchon Attorneys at Law, Korea

Tuesday, April 29, 2008, 1:45 PM – 3:15 PM

USING TRADE AGREEMENTS TO DO BUSINESS IN BRAZIL, CHILE, AND MEXICO: A LATIN AMERICAN APPROACH

Focusing on trade agreements between the Latin American countries of Brazil, Chile, and Mexico and selected countries in the Asia-Pacific region, this panel will examine how each of the Latin American countries has structured its trade agreements, including the regulation of goods, services, and investments. In addition, panelists will examine characteristic trade disputes in the region and explore effective strategies for their successful resolution.

Committee Sponsor:

International Trade

Moderator:

Cliff Sosnow, Blake, Cassels & Graydon LLP, Canada

Panelists:

Stephan Becker, Pillsbury Winthrop Shaw Pittman LLP, United States
Marcelo Calliari, TozziniFreire Advogados, Brazil
Jaime Irrarrazabal, Philippi, Yrarrázaval, Pulido & Brunner, Chile
Turenna Ramirez, Basham, Ringe y Correa, S.C., Mexico

COLLAPSING BOUNDARIES: TECHNOLOGY, COMMUNICATIONS, AND ENTERTAINMENT DELIVERY [PART 1]

In our rapidly changing world, technology is becoming increasingly intertwined with communications and entertainment, affecting both the content and the method of its distribution via audio, video, and the Internet. In the first of two sessions, get an overview of this new world, and learn how to work within its changing laws and benefit from its innovations. The second panel in this two-part session will address the fundamental tensions among consumers, creators of content, and distributors, and how such tensions can be resolved.

Committee Co-Sponsors:

Intellectual Property
Technology and Communications

Co-Moderators:

Bert Oosting, Lovells LLP, Netherlands
Dennis Unkovic, Meyer, Unkovic & Scott LLP, United States

Panelists:

Mark V. Lindsay, Johnston Barton Proctor & Rose LLP, United States
James D. Nguyen, Foley & Lardner LLP, United States
Hiroki Saito, Mori Hamada & Matsumoto, Japan
Scott C. Sander, SightSound Technologies, United States
Joyce A. Tan, Joyce A. Tan & Partners, Singapore

THE RISE OF ISLAMIC FINANCE

Islamic law prohibits the payment or receipt of interest. In addition, transparency, accounting methodologies, and ratings standards have yet to be rationalized across Muslim economies. Yet despite these obstacles, Islamic finance is experiencing spectacular growth within the global marketplace. This panel will explore the basic principles of Islamic finance, recent developments in Islamic consumer finance, and the unique issues involved in litigating an Islamic finance-related issue.

Committee Sponsor:

Banking, Finance, and Securities

Moderator:

Gerhard Wegen, Gleiss Lutz, Germany

Panelists:

Kilian Bälz, Harvard Law School, United States
Jeyanthini Kannaperan, Shearn Delamore & Co., Malaysia
Iswahjudi A. Karim, KarimSyah Law Firm, Indonesia
Norliza Mohammed, ARSA Lawyers (Abdul Raman Saad & Associates), Malaysia

TAX EQUALIZATION POLICIES AND BENEFITS AFFECTING TODAY'S GLOBAL EXECUTIVE

With the expansion of global business, there have been increasing secondments and transfers of staff within multinational corporations to foreign units and affiliates. Tax equalization policies and benefits – including stock options and performance-based prosperity plans – have been finding their way into remuneration packages of many senior executive staff working abroad. This panel will examine the pertinent tax issues facing both employee and employer in such instances, under the laws and practice of various jurisdictions.

Committee Sponsor:

Tax Law

Moderator:

Ada Ko, Lane Powell PC, United States

Panelists:

Marsha-laine Dungog, Liner Yankelevitz Sunshine & Regenstreif LLP, United States
Leonard Glass, Lawson Lundell LLP, Canada
Jan Kooi, Van Mens & Wisselink, Netherlands
Carmen McElwain, Maddocks, Australia
Kotaro Okamoto, Anderson Mori & Tomotsune, Japan
George A. Ribeiro, Vivien Chan & Co., Hong Kong

BALANCING INTERESTS: INSOLVENCY REFORM IN THE ASIA-PACIFIC REGION [PART 1]

An effective insolvency regime is a key component of any jurisdiction's commercial law system. A number of countries in the Asia-Pacific region have recently implemented or are implementing reforms to their insolvency regimes. This two-part program will provide insight into the work being done by the World Bank and the Asian Development Bank (ADB) in the area of insolvency law reform and the insolvency reform process adopted by a number of Asia-Pacific jurisdictions. The first session will feature a discussion of the efforts of the World Bank and the ADB to promote insolvency law reform generally and in the Asia-Pacific region in particular.

Committee Sponsor:

Insolvency

Moderator:

James Sprayregen, Goldman Sachs, United States

Panelists:

Sumant Batra, Kesar Dass B & Associates, India
Hamid L. Sharif, Asian Development Bank, Philippines
Mahesh Uttamchandani, The World Bank, United States

Tuesday, April 29, 2008, 3:45 PM – 5:15 PM

BILATERAL INVESTMENT TREATIES: LESSONS LEARNED FROM THE LATIN AMERICAN EXPERIENCE

Bilateral investment treaties (BITs) are universally accepted instruments for the promotion and legal protection of foreign investments in developing countries, and for the resolution of related disputes. One-third of all such disputes and more than half of pending arbitrations involve Latin American countries. With a primary focus on the Pacific Rim, this panel will examine significant decisions related to such disputes and distill key lessons learned for investors in Latin America.

Committee Co-Sponsors:

Cross-Border Investment
Dispute Resolution and Arbitration
International Trade

Co-Moderators:

Ulf Ohrling, Mannheimer Swartling Advokatbyrå Ab, China
Cliff Sosnow, Blake, Cassels & Graydon LLP, Canada

Panelists:

Paolo Di Rosa, Arnold & Porter LLP, United States
Alejandro A. Escobar, Latham & Watkins LLP, United Kingdom
José Rosell, Hughes Hubbard & Reed LLP, France

DELEGATE EDUCATIONAL PROGRAM

COLLAPSING BOUNDARIES: TECHNOLOGY, COMMUNICATIONS, AND ENTERTAINMENT DELIVERY [PART 2]

Please see Tuesday, April 29, 2008, 1:45 PM – 3:15 PM for a complete description and list of speakers.

AIRPORT INFRASTRUCTURE AND THE AVIATION INDUSTRY: TACKLING THE LEGAL ISSUES

Noise pollution, environmental issues, airport safety, and airport security are key issues faced by the aviation and airport infrastructure industries. This informative session will focus on the legal aspects of these issues, and how most effectively to address them.

Committee Co-Sponsors:

Aerospace Law
Environmental Law

Moderator:

Vi Ming Lok, S.C., Rodyk & Davidson LLP, Singapore

Panelists:

Bruce Aitken, Aitken Berlin, LLP, United States
Peter Coles, Barlow Lyde & Gilbert, Hong Kong
Brian C. Dalrymple, Nixon Peabody LLP, United States
R. Bruce Keiner Jr., Crowell & Moring LLP, United States
Kaori Miyake, Federal Express Corporation, Japan

WORKERS WITHOUT BORDERS: THE AGE OF THE GLOBAL EMPLOYEE

This panel will explore the various legal issues that arise as a result of the cross-border movement of workers, especially in the context of multinational corporations with operations and customers all over the world.

Committee Co-Sponsors:

Employment and Immigration Law
Tax Law

Moderator:

Sandra McCandless, Sonnenschein Nath & Rosenthal LLP,
United States

Panelists:

David Elenbaas, McMillan Binch Mendelsohn LLP, Canada
Stephen J. Hirschfeld, Curiale Dellaverson Hirschfeld & Kraemer, LLP,
United States
Hideki Thurgood Kano, Anderson Mori & Tomotsune, Japan
Christopher L. Thomas, Holland & Hart LLP, United States
Gary P. Tober, Lane Powell PC, United States

BALANCING INTERESTS: INSOLVENCY REFORM IN THE ASIA-PACIFIC REGION [PART 2]

The second session of this two-part panel will review the efforts of various Asia-Pacific countries that have recently reformed or are in the process of reforming their insolvency regimes. Particular attention will be paid to the process each jurisdiction has followed to address challenges and achieve the desired reforms.

Committee Sponsor:

Insolvency

Moderator:

James Sprayregen, Goldman Sachs, United States

Panelists:

Lynn P. Harrison, III, Curtis, Mallet-Prevost, Colt & Mosle LLP,
United States
Dominic Hui, Vivien Chan & Co., China
Edward E. Lehman, Lehman, Lee & Xu, China
Arnold M. Quittner, Peitzman, Weg & Kempinsky LLP, United States
Steven J. Weisz, Blake, Cassels & Graydon LLP, Canada

Wednesday, April 30, 2008, 9:00 AM – 10:30 AM

THE GLOBAL INVESTMENT RACE FOR ENERGY AND RESOURCES [PART 1]

Many developing and prosperous Asian countries such as China, India, Japan, and South Korea require vast quantities of natural resources to continue their economic expansion. Through a discussion of their own investment experiences, panelists will review the energy requirements of these countries, the energy and natural resource supplies they are seeking offshore, the areas of the world they are targeting for investment, and the reasoning behind their choices.

Committee Co-Sponsors:

Cross-Border Investment
Energy and Natural Resources

Co-Moderators:

Ignatius Hwang, Freehills, Singapore
Roger S. Saxton, Nash O'Neill Tomko Lawyers, Australia

Panelists:

Doo Sik Kim, Shin & Kim, Korea
Robert Y. Kwauk, Blake, Cassels & Graydon LLP, China
Charles E. Schwenck, Greenberg Traurig, LLP, United States
Sunil Seth, Seth Dua & Associates, India

FILLING THE PIPELINE: CUTTING-EDGE TECHNIQUES FOR GETTING AND KEEPING YOUR CLIENTS [PART 1]

Moving beyond theory, this two-part interactive workshop will enable participants to work through a real scenario to learn more about the business development skills that today's highly competitive legal environment demands. It will address the what, when, why, and how of client relationship management, the difference between marketing and business development, and the most effective tools and techniques to support marketing and business development efforts.

Committee Sponsor:

Legal Development and Training

Presenters:

Ann Miller, Nixon Peabody LLP, United States
Roberta Montafia, Roberta Montafia Consulting, United States
Terri Mottershead, Heller Ehrman LLP, United States

Facilitators:

Brent Caslin, Kirkland & Ellis LLP, United States
John W. Craig, McMillan Binch Mendelsohn LLP, Canada
Susan de Silva, Alban Tay Mahtani & de Silva, Singapore
Katrina Dewey, Lawdragon Inc., United States
D. Craig Parry, Parr Waddoups Brown Gee & Loveless, United States
Fernando Peláez-Pier, Hoet Peláez Castillo & Duque, Venezuela

RAISING MONEY IN THE ENTERTAINMENT INDUSTRY: AN OVERVIEW OF INNOVATIVE FINANCING VEHICLES

This panel will explore the entertainment industry across media platforms, continents, and industry segments, highlighting innovative means used to finance such ventures as Hollywood and Bollywood feature films, television programming, and music production. Panelists will also discuss optimal transactional structures in cases where intellectual property valuation is instrumental in determining a deal's overall value.

Committee Co-Sponsors:

Banking, Finance, and Securities
Intellectual Property
Tax Law

Moderator:

Shourya Mandal, Fox Mandal Solicitors & Advocates, India

Panelists:

Dan Miller, Screen Capital International, United States
Ameet Naik, Naik, Naik, Iyer & Co., India
Roy A. Salter, The Salter Group, LLC, United States
Barry H. Smith, Reed Smith LLP, United Kingdom
Matthew C. Thompson, Stroock & Stroock & Lavan LLP, United States

DEALING WITH A FAILED INTERNATIONAL CONSTRUCTION PROJECT: A CASE STUDY

A Singapore-based company with branches in Australia, Indonesia, Japan, the United States, and Malaysia has recently defaulted on its payment obligations. Various preliminary attempts at negotiating a consensual workout with its banks have failed. The company has not discharged its income tax liability for several years and has failed to pay its employees. While the business continues to remain fundamentally sound, a formal restructuring is required. Panel members will address specific aspects of the restructuring particular to their jurisdictions and discuss how the cross-border nature of the company's business impacts its ability to effectively reorganize.

Committee Sponsor:

Insolvency

Moderator:

Sarjit Singh Gill, S.C., Shook Lin & Bok, Singapore

Panelists:

Rahmat Bastian, BTPartnership, Indonesia
Ashley M. Howlett, Jones Day, China
Wendy Jacobs, Dibbs Abbott Stillman, Australia
Mohanadass Kanagasabai, Shook Lin & Bok, Malaysia
Masafumi Kodama, Kitahama Partners, Japan
Malhar S. Pagay, Pachulski Stang Ziehl & Jones LLP, United States

Wednesday, April 30, 2008, 11:00 AM – 12:30 PM

THE GLOBAL INVESTMENT RACE FOR ENERGY AND RESOURCES [PART 2]

The second session of this two-part panel will provide a jurisdictional overview of key resource-rich investment targets in South America, exploring the political, economic, and legal frameworks for successful investments in this region.

Committee Co-Sponsors:

Cross-Border Investment
Energy and Natural Resources

Co-Moderators:

Ignatius Hwang, Freehills, Singapore
Roger S. Saxton, Nash O'Neill Tomko Lawyers, Australia

Panelists:

Jean Paul Chabaneix, Rodrigo, Elías & Medrano Abogados, Peru
José Luis de Salles Freire, TozziniFreire Advogados, Brazil
Gonzalo Jiménez, Cariola Díez, Pérez-Cotapos & Cía. Ltda., Chile
Miguel Rivero, Hoet Peláez Castillo & Duque, Venezuela
Santiago J. Sturla, Allende & Brea Abogados, Argentina

DELEGATE EDUCATIONAL PROGRAM

FILLING THE PIPELINE: CUTTING-EDGE TECHNIQUES FOR GETTING AND KEEPING YOUR CLIENTS [PART 2]

Please see Wednesday, April 30, 2008, 9:00 AM – 10:30 AM for a complete description and list of speakers.

RAISING MONEY IN THE ENTERTAINMENT INDUSTRY: INTELLECTUAL PROPERTY RIGHTS AS DEAL COLLATERAL

This panel will focus on how to use intellectual property rights as collateral when it is necessary to provide an asset to finance a transaction. In particular, the panel will explore key transaction types, such as corporate restructurings, when this method of securitizing intellectual property rights is well suited to a venture.

Committee Co-Sponsors:

Banking, Finance, and Securities
Intellectual Property
Tax Law

Moderator:

Shourya Mandal, Fox Mandal Solicitors & Advocates, India

Panelists:

Mark J. Chandler, Invotex Group, United States
David Molner, Screen Capital International, United States
Patrick A. Russo, The Salter Group, LLC, United States
M. Kenneth Suddleson, Foley & Lardner LLP, United States
Lawrence Ulman, Gibson Dunn & Crutcher LLP, United States

COMMERCIAL ARBITRATION IN ASIA TODAY: ARE THE COURTS HANDS ON OR HANDS OFF?

This panel will explore key aspects of commercial arbitration, including public policy as a reason for setting aside arbitral decisions; the enforcement of interim and final arbitral decisions; and the challenges to arbitrators – to their appointment, their conduct, their decisions, and their awards.

Committee Sponsor:

Dispute Resolution and Arbitration

Co-Moderators:

Sally Harpole, Sally Harpole & Co, China
John N. West QC, Selborne Chambers, Australia

Panelists:

Dushyant Dave, Supreme Court of India, India
Steven C. Nelson, Dorsey & Whitney LLP, Hong Kong
Dong-Seok Oh, Kim & Chang, Korea
Gary K. L. Soo, Gary Soo's Chambers, Hong Kong
Hiroyuki Tezuka, Nishimura & Asahi, Japan
Alvin Yeo, WongPartnership, Singapore

CROSS-BORDER POLLUTION: CRITICAL SUCCESS FACTORS FOR PROTECTING CLIENTS

Pollution knows no boundaries. In an increasingly industrialized global economy, how should attorneys advise clients faced with pollution originating from another country? And, conversely, what are the factors that must be considered when a client's operations have an environmental impact beyond their own borders? This panel will explore the role of attorneys in counseling clients facing such cross-border pollution issues.

Committee Sponsor:

Environmental Law

Moderator:

Brad Wylynko, Clayton Utz, Australia

Panelists:

Takeshi Kikuchi, Kojima Law Offices, Japan
Todd O. Maiden, Reed Smith LLP, United States
Akiko Monden, TMI Associates, Japan

Wednesday, April 30, 2008, 1:30 PM – 3:00 PM

CORPORATE COUNSEL FORUM

PRESENTED IN COOPERATION WITH THE ASSOCIATION OF CORPORATE COUNSEL (ACC)

Whether you are in-house or outside counsel, if your client requires legal work across borders, and you are not locally admitted or fully versed in the rules regulating your practice "incursions" into jurisdictions where you're not admitted, you are exposing your client to risk and yourself to possible professional and personal sanctions. Cross-border professional regulation is an emerging field, confused by the fact that most jurisdictions' rules and guidance are based on concepts related to regulation defined by geographic boundaries, when clients' business needs are "beyond borders." The Corporate Counsel Forum, presented in cooperation with the Association of Corporate Counsel (ACC), will feature experts on international multi-jurisdictional practice (MJP), as well as in-house and outside counsel for multinational corporations, who will share practical ideas and experience regarding cross-border legal practice for clients and the in-house and outside counsel who represent them.

Moderator:

Susan Hackett, Association of Corporate Counsel, United States

Panelists:

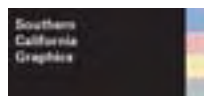
Janine M. Dascenzo, General Electric Company, United States
David Kreider, Vodafone New Zealand Ltd, New Zealand
Vijaya Sampath, Bharti Enterprises Limited, India
Edith Shih, Hutchison Whampoa Limited, Hong Kong

SPONSORS

Platinum Sponsors



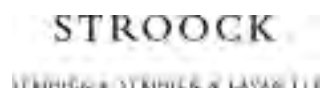
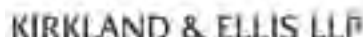
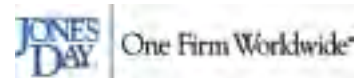
THE SALTER GROUP
Independent Financial & Strategic Advisors



Gold Sponsors



GIBSON, DUNN & CRUTCHER LLP



Silver Sponsors



Bronze Sponsors



SOCIAL PROGRAM

WELCOME COCKTAIL RECEPTION PRESENTED BY GLOBAL CONSULTANTS & SERVICES LIMITED (GCSL)

Business Casual Attire



A welcome reception will be held on Sunday, April 27, 2008, at the Hyatt Regency Century Plaza Reflecting Pools and Garden. The reception will offer Conference delegates and accompanying persons an opportunity to gather, meet Conference participants and other colleagues, and renew friendships. Cocktails and hors d'oeuvres will be served underneath the beautiful Los Angeles sky as we give this outdoor area an elegant atmosphere for everyone to enjoy.

M.S. LIN SCHOLARS AND NEW MEMBERS RECEPTION

Business Casual Attire

The volunteer leaders of the IPBA would like to personally welcome all new members and M.S. Lin Scholars attending the IPBA Annual Conference at a special reception in their honor. The reception will begin shortly before the Welcome Cocktail Reception to give everyone the opportunity to mingle in a more intimate atmosphere.

WOMEN BUSINESS LAWYERS RECEPTION

Business Casual Attire

The Women Business Lawyers Committee cordially invites all women lawyers to gather shortly before the Welcome Cocktail Reception for an exclusive opportunity to meet and get to know their colleagues from around the world.

GETTY CENTER GALA

Business Attire



A festive event is planned for Monday, April 28, 2008, at the Getty Center, a premier Los Angeles venue and world-class museum. Opportunities to hold events at the Getty are limited and exclusive. Conference delegates and accompanying persons will enjoy an exquisite dining experience in the museum's courtyard. In addition to having access to the Getty's spectacular grounds during the evening, attendees will enjoy exclusive entry to the West Pavilion and Special Exhibitions Pavilion.



The West Pavilion is home to world-renowned 19th century European paintings including Van Gogh's *Irises* and works by Monet, Manet, Degas, and Cézanne; 18th and 19th century European sculptures, including a gallery devoted to works in terracotta; and a stunning assortment of Italian furniture, ceramics, and gilt-bronze objects from the mid-17th to the end of the 18th century. There will be a premiere presentation in the Special Exhibitions Pavilion that is the first comprehensive survey of video art emerging from Northern and Southern California in the late 1960s up to the present.

SONY STUDIOS FAREWELL GALA

Business Casual Attire



Conference delegates and accompanying persons will enjoy a red carpet affair at Sony Pictures Studios on Tuesday, April 29, 2008. In addition to enjoying dinner presented by internationally acclaimed chef Wolfgang Puck, attendees will have the opportunity to mingle with Hollywood look-alikes and participate in a guided tour of the Sony back lot.



During the tour, participants will hear stories about famous film and television productions that have graced the historic Sony lot, such as *The Wizard of Oz*, *Men in Black*, and *Spider-Man*. Guests will see the sets of current film or television productions, hearing tales of days gone by. The wide variety of activity at the studio guarantees that no two tours will be alike, and you never know what – or who – might be just around the corner!



Allen & Gledhill
ADVOCATES & SOLICITORS

ANDERSON MÖRI & TOMOTSUNE



bkl
BAE, KIM & LEE LLC

beckerglynn
BECKER, GLYNN, MELAMED & MUFFY LLP

BEITEN BURKHARDT

BUDDLE FINDLAY
NEW ZEALAND LAWYERS

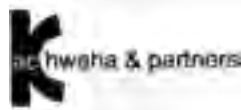


CLAYTON UTZ

FASKEN
MARTINEAU



Herbert Smith, Gleiss Lutz, Stibbe



KEESAL
YOUNG
LOGAN

KEIWA SOGO LAW OFFICES

KIM & CHANG



Kojima Law Offices
Attorneys at Law

LEE & KO
律師樓 廣場



Lovells

LOYENS LOEFF



McMILLAN BINCH MENDELSON

MIYAKE & YAMAZAKI

MORI HAMADA & MATSUMOTO



NAGASHIMA OHNO & TSUNEMATSU

NISHIMURA
& ASAHI

OH-EBASHI LPC & PARTNERS



ROMULO
ROMULO MARIANO DE OLIVEIRA
SANTOS & ASSOCIADOS



Shearn Delamore & Co

SHIN & KIM

SOEBAGJO, JATIM, DJAROT
ATTORNEYS AT LAW

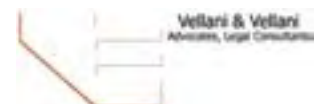


TOZZINI FREIRE
ADVOCADOS

Turner
Freeman
Lawyers



VEIRANO ADVOGADOS



WONG PARTNERSHIP

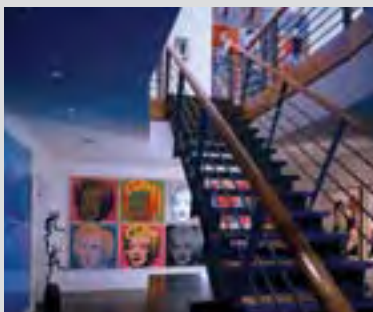
YULCHON
律村
YULCHON
Attorneys at Law

ACCOMPANYING PERSON AND PRE/POST CONFERENCE PROGRAM

Accompanying Person Program

THE WEISMAN ART FOUNDATION AND RODEO DRIVE: THE CUTTING-EDGE OF ART AND COUTURE

Monday, April 28, 2008



Accompanying persons will start their day with a private guided tour of one of the city's cultural gems, the Frederick R. Weisman Art Foundation. Nestled in an exclusive neighborhood in Holmby Hills, this 1920s Mediterranean-style villa serves as a showcase for Weisman's personal collection of 20th century art. The nearly 500 works displayed by the Frederick R. Weisman Art Foundation include pieces from European Modernism, Surrealism, Abstract Expressionism, Pop Art, SuperRealism, and contemporary California art.



After an elegant lunch at Wolfgang Puck's flagship restaurant, Spago Beverly Hills, accompanying persons will continue their afternoon with a shopping excursion to Rodeo Drive, known to the world for its fabulous shops featuring luxury jewelry and couture fashion. Accompanying persons will be hosted first by Ferragamo, where they will sip champagne while enjoying an informal fashion show featuring Ferragamo's latest clothing designs, and then by Chanel, where they will enjoy high tea on the private fourth-floor roof terrace of Chanel's exquisite store.

DISNEY HALL AND THE L.A. FASHION DISTRICT: THE EPICENTER OF MUSIC AND FASHION DESIGN

Monday, April 28, 2008



Accompanying persons will start their day with a private tour of the Walt Disney Concert Hall, home to the Los Angeles Philharmonic. Designed by world-acclaimed architect Frank Gehry, Disney Hall has quickly overtaken the Hollywood sign as the landmark of Los Angeles.

Continuing on to the L.A. Fashion District, accompanying persons will visit the California Market Center, the largest wholesale fashion mart in the world; selected wholesale showrooms, where they will see firsthand how the retail trade purchases garments on a mass scale; a fashionable designer studio, where a local L.A. designer will share insights on how designers "break into the business"; and a variety of small boutiques tucked away on the busy streets surrounding the wholesale buildings. Accompanying persons will have ample opportunity to shop for limited production garment and accessory samples normally unavailable to the public and enjoy lunch in the trendy "fashionista" haven of the Fashion District.

A PRIVATE DAY AT THE HUNTINGTON LIBRARY AND BOTANICAL GARDENS

Tuesday, April 29, 2008



Henry Huntington began developing the Botanical Gardens of The Huntington Library, Art Collections, and Botanical Gardens over 100 years ago. Today, the gardens span 120 acres and feature more than 15,000 kinds of plants from all over the world. On a day closed to the public, private guides will lead accompanying persons on an exclusive, private tour of the newly opened Chinese Garden featuring a beautiful lake and waterfall accented by Tai Hu rocks, five hand-carved stone bridges, and other exquisitely carved wooden and tiled pavilions transported directly from China and installed by Chinese craftsmen from Suzhou. After a casual lunch in the Garden Terrace, accompanying persons will spend the afternoon exploring their choice of the Desert Garden, one of the largest assemblages of cacti in the world; the Rose Garden, a collection of rose species dating back to the ancient Egyptians; or the Japanese Garden, a tranquil, quiet retreat from the rapid pace of daily life.

GETTING YOUR CHILD ADMITTED INTO A TOP U.S. UNIVERSITY

Wednesday, April 30, 2008

Preparing your children for college can be a daunting task for any parent. Accompanying persons will hear from a University of Southern California (USC) admissions officer firsthand the "do's and don'ts" of getting today's generation of children admitted into a top university in the United States. In addition, accompanying persons will learn about USC's focus on attaining one of the largest international student populations of any U.S. university, and hear an insider's perspective on the opportunities and challenges faced by international students in today's highly competitive academic environment.

FROM ANCIENT TIMES TO MODERN LIVING: A DAY AT LIVINGHOMES AND THE GETTY VILLA

Wednesday, April 30, 2008



Accompanying persons will participate in a private tour of a modernist home that allows luxury and the environment to coexist in harmony. This 2,500-square-foot LivingHome, tucked away in Santa Monica, is the first home in the United States to achieve “platinum” certification from the United States Green Building Council’s LEED for Homes Program. The home’s owner and LivingHomes’ CEO will explain how eco-friendly architects and builders are utilizing the latest natural, nontoxic, and sustainably derived materials to build homes that have a dramatically smaller ecological footprint, yet offer equally impressive flair for design and comfort.



After lunch, accompanying persons will embark on an excursion to ancient Rome as they explore the Getty Villa, which houses the Greek, Roman, and Etruscan antiquities collection of the J. Paul Getty Museum. On a day closed to the public, private guides and Villa Gallery teachers will conduct a private tour of the museum, as well as the exterior gardens, where replica bronze sculptures, fountains, and lush plantings of trees, herbs, and flowers will delight the senses and provide key insights into the historical significance of daily life at a Roman villa.

Pre/Post Conference Program

LOS ANGELES IN A DAY

Sunday, April 27, and Thursday, May 1, 2008



As the entertainment and creative capital of the world, Los Angeles offers a wealth of experiences that few other destinations can match. Conference delegates and accompanying persons will enjoy a personal exploration of the latest, hottest, and most famous spots that define Los Angeles. Knowledgeable tour guides will lead a sightseeing tour featuring such Los Angeles landmarks as the Kodak Theater, the Mann Chinese Theatre and its celebrity footprints, the Hollywood Walk of Fame, the Hollywood sign, Sunset Strip, Melrose Avenue, and Rodeo Drive.

LOS ANGELES CELEBRITY HOMES UP CLOSE AND PERSONAL

Sunday, April 27, and Thursday, May 1, 2008



Los Angeles is home to many of the world’s most famous celebrities. During this private tour, delegates and accompanying persons will drive through the elite communities of Hollywood, Hollywood Hills, Beverly Hills, Holmby Hills, and Bel-Air to view over 40 homes and mansions belonging to many of Hollywood’s biggest stars and legends.

SURF, SAND, AND SUN: THE CALIFORNIA BEACH SCENE

Sunday, April 27, 2008



With more than 50 miles of coastline, the 33 public beaches of Los Angeles are as diverse as they are long. Conference delegates and accompanying persons will start their tour at Fisherman’s Village in Marina del Rey, the biggest man-made harbor in the world, and will proceed to Venice Beach, where muscle men pumping iron, rollerblading beachgoers, and offbeat street performers make up one of the most eclectic beaches in the world. The tour will also stop at the famous Santa Monica Pier, a key landmark for film and television programs seen throughout the world.

AN EVENING OF ILLUSION AT THE MAGIC CASTLE

Wednesday, April 30, 2008

Business Attire



The Magic Castle is the world’s most famous club for magicians and magic enthusiasts. The magnificent building that houses the Magic Castle was built in 1908 and has served as the showplace for some of the greatest magicians from around the globe for almost 100 years. Delegates and accompanying persons will have the opportunity to dine at the club and see the shows playing in the Parlour of Prestidigitation, the Palace of Mystery, and the Close-Up Gallery.

ANNUAL IPBA GOLF TOURNAMENT AT TRUMP NATIONAL GOLF CLUB Thursday, May 1, 2008



Delegates and accompanying persons are invited to take part in the Annual IPBA Golf Tournament at the highly acclaimed Trump National Golf Club. Golfers will enjoy spectacular panoramic views of the Pacific Ocean while they participate in a collegial, shotgun tournament on this world-class golf course. After the tournament, golfers will have the opportunity to socialize with other tournament players during a delicious barbecue-style lunch and post-tournament awards ceremony where they will learn who has won the revered Teddy Regala trophy for the new IPBA year.

FINE WINE...UNCORKED: A DAY IN SANTA BARBARA WINE COUNTRY Thursday, May 1, 2008



Tour the Santa Ynez Valley, the heart of Santa Barbara wine country, and taste acclaimed Pinot Noir, Chardonnay, Syrah, and other local wines during this exclusive one-day wine adventure. During the day, delegates and accompanying persons will enjoy a private, guided tour of four local wineries, sample the tastes unique to the Santa Ynez Valley, learn more about the distinctive characteristics that define this region,

and dine in the open air at a picnic lunch arranged at one of the vineyards. During the adventure, there will be ample time to photograph the breathtaking scenery along the way, from the picturesque vineyards and quaint, rustic towns to the majestic backdrop of the Santa Ynez Mountains and the California coastline.

CATALINA ISLAND ADVENTURE Thursday, May 1, 2008



The Catalina Island adventure begins as delegates and accompanying persons board a Catalina Express catamaran and enjoy the ocean breeze and catch a glimpse of the white-sided dolphins that populate the island. Upon arriving, delegates and accompanying persons can choose to get up close to barracudas, sea lions, spiny lobsters, moray eels, and golden garibaldi fish in the comfort of a modern glass-bottom boat; rent a bike, kayak, or snorkeling gear; take a tour of the island on a golf cart; or explore the quaint town of Catalina by taking a city tour.

LAS VEGAS: A WEEKEND IN SIN CITY Thursday, May 1 – Sunday, May 4, 2008



Embark on a three-day excursion to Las Vegas and stay on the "Strip" at the world-renowned Caesars Palace, where delegates and accompanying persons will

be ideally located to enjoy endless hours of shopping, dining, and gambling in the new entertainment capital of the world. During the trip, delegates and accompanying persons will take a tour of the Hoover Dam, the most popular sightseeing attraction in Las Vegas and one of the seven modern wonders of the world. Ample opportunities will be provided along the way to photograph the Hoover Dam, Lake Mead, and the Colorado River. During leisure time, delegates and accompanying persons can choose from an abundance of activities, from gambling at the casinos to taking in a headliner show, shopping in the world's finest retail stores, or experiencing the thrill of Las Vegas nightlife.

A WEEKEND OF LUXURY ON OAHU

Friday, May 2 – Monday, May 5, 2008



With luminous beaches, lush rain forests, and crystal clear waters, Hawaii is a perfect paradise for a weekend getaway. Delegates and accompanying persons will travel to Oahu and stay at the luxury hotel Outrigger Waikiki on the Beach, located on the world-famous Waikiki Beach. While each tour package includes one voucher to play an 18-hole round of golf at the highly acclaimed Ko Olina golf course and an additional voucher good for a massage or facial at the Waikiki Plantation Spa, there are myriad other activities, from whale watching to snorkeling, horseback riding, sports fishing, hiking, sightseeing, and shopping, that are equally suited for the vacationer seeking relaxing diversions or active recreation.

ACCOMPANYING PERSON AND PRE/POST CONFERENCE PROGRAM TERMS AND CONDITIONS

All accompanying person and pre/post Conference tours and activities are for registered delegates and accompanying persons of the IPBA 2008 Annual Conference only. All sightseeing tours include informative commentary in English, all entry fees, and meals where specified. Comfortable shoes and clothing are recommended for all tours and activities, except where specific attire is indicated. For any outdoor tours, sun protection, hats, and sunglasses are recommended.

All tours are based on a minimum number of participants. If minimum numbers are not reached, alternative arrangements or a complete refund will be provided. Openings on all tours are limited and will be allocated strictly in order of receipt of payment. A 50% refund will be made for pre/post Conference tour and activity cancellations made in writing and received by the Conference Executive Producer on or before March 15, 2008. After March 15, 2008, registration fees are nonrefundable.

The services specified in the descriptions of accompanying person and pre/post Conference tours and activities are available as of December 15, 2007. In the event that any tour or activity becomes unavailable for any reason, every effort will be made to provide alternative services of equivalent standard and value. However, neither the IPBA, IPBA 2008 Annual Conference, Inc., nor the Conference Executive Producer can accept any responsibility for failure to provide the specified tours and activities.

By registering for the IPBA 2008 Annual Conference, delegates and accompanying persons acknowledge that neither the IPBA, IPBA 2008 Annual Conference, Inc., nor the Conference Executive Producer is liable for any personal injury or damage to or loss of personal property suffered or incurred before, during, or after the Conference.

MEDIA/ASSOCIATION PARTNERS

Media Partners



Exclusive Asia-Pacific
Legal Media Partner



Association Partners



PHILIPPINE AMERICAN
BAR ASSOCIATION



REGISTRATION, HOTEL, AND GENERAL TRAVEL INFORMATION

WAYS TO REGISTER

Delegates and accompanying persons may register online at www.ipba2008.com or by submitting the registration form enclosed in this brochure via postal mail, fax, or email to the Conference Executive Producer.

KEY DATES

Date	Registration Milestones
January 2008	Online Registration Opens
February 29, 2008	Early Bird Registration Ends
March 15, 2008	50% Cancellation Fee Period Ends
April 18, 2008	Regular Registration Ends
April 18, 2008	Registration Transfer Option Ends

ENTITLEMENTS

For Delegates:

- Delegate Educational Program
- Exhibition Hall
- Breakfasts, April 28-30, 2008
- Lunches, April 28-29, 2008
- Lunch and Annual Meeting, April 30, 2008
- Welcome Cocktail Reception, April 27, 2008
- Getty Center Gala, April 28, 2008
- Sony Studios Farewell Gala, April 29, 2008
- Host Committee Receptions, April 30, 2008
- Conference Satchel and Materials

Some or all of the delegate educational program may be eligible for CLE credits in the United States. Please check the Conference website, www.ipba2008.com, for more information.

For Accompanying Persons:

- Welcome Cocktail Reception, April 27, 2008
- Getty Center Gala, April 28, 2008
- Sony Studios Farewell Gala, April 29, 2008

CONFERENCE PRICING

Category	Early Bird ¹	Regular ²	On-Site
IPBA Members	US \$1,450	US \$1,625	US \$1,750
Non-IPBA Members	US \$1,650	US \$1,825	US \$1,950
Young Lawyer Members ³	US \$1,250	US \$1,400	US \$1,500
Accompanying Persons	US \$875	US \$1,000	US \$1,100

¹Early bird rates are valid on or before February 29, 2008.

²Regular rates are valid between March 1, 2008, and April 18, 2008. On or after April 19, 2008, on-site registration pricing will apply.

³Maximum age for young lawyers is 30 years old on April 27, 2008. Please enclose a copy of your passport or other ID for certification with your registration form.

PAYMENT OF FEES

Credit Card

Credit card payments may be made by MasterCard, Visa, American Express, and JCB. Credit card transactions will appear on your statement as follows: THR* IPBA Event Registration.

Check

U.S. residents may pay by eCheck during online registration.

All bank draft checks must be made in U.S. dollars only and be drawn on a U.S. bank. Checks should be made payable to the IPBA 2008 Annual Conference, Inc. Your name should be typed or printed clearly in the memo section of the check.

Wire Transfer

If you would like to pay your fees by direct wire transfer, please refer to the registration form for wire transfer instructions.

CANCELLATION AND REFUND SCHEDULE

A 50% refund will be made for cancellations made in writing and received by the Conference Executive Producer on or before March 15, 2008. After March 15, 2008, registration fees are nonrefundable. Your registration may be transferred to another individual upon written request submitted to the Conference Executive Producer on or before April 18, 2008.

CONFERENCE CONTACT INFORMATION

IPBA 2008 Annual Conference
10920 Wilshire Boulevard, Suite 150-9128
Los Angeles, CA 90024
United States of America
T: +1.310.478.0170
F: +1.310.474.7687
Email: info@ipba2008.com
Website: www.ipba2008.com

REGISTRATION AND CONFERENCE SERVICE DESK HOURS

Sunday, April 27, 2008
10:00 AM – 6:00 PM

Monday, April 28, 2008
7:30 AM – 6:00 PM

Tuesday, April 29, 2008
7:30 AM – 6:00 PM

Wednesday, April 30, 2008
7:30 AM – 5:00 PM

Delegates, accompanying persons, sponsors, and exhibitors should check in at the Conference registration desk upon arrival. The Conference services staff will be available throughout the Conference to provide assistance to all Conference attendees.

HYATT REGENCY CENTURY PLAZA OVERVIEW



Surround yourself with contemporary glamour and style at the Hyatt Regency Century Plaza. Perfectly situated on the fashionable Westside, adjacent to Beverly Hills, this legendary hotel recently completed a US \$30 million renovation. All 726 guest-rooms and suites have been fully refurbished and feature the sumptuous Hyatt Grand Bed, 32" LCD TV, iHome stereo, and private lanai with panoramic views of the Los Angeles skyline and the Pacific Ocean. Additional enhancements include a one-of-a-kind, ground-level Regency Club; a Starbucks coffee bar; an Equinox Fitness Club and Spa; and X Bar, L.A.'s newest indoor/outdoor modern bar. The Century Plaza is a resort retreat in the midst of the city, and the choice of dignitaries for more than 40 years.

Room Rates

Single/Double Occupancy: US \$249 per day
Century Suite: US \$449 per day

Room rates are exclusive of applicable state and local taxes, applicable service fees, and hotel-specific fees in effect at the hotel at the time of the Conference. Conference room rates are based on availability. Conference attendees are encouraged to make reservations no later than March 31, 2008. Subject to hotel availability, the rates established will also be offered for an additional four days prior to and after the official Conference arrival and departure dates of April 27, 2008, and April 30, 2008.

Hotel Contact Information

Hyatt Regency Century Plaza
2025 Avenue of the Stars
Los Angeles, CA 90067
United States of America
U.S. Reservations: 1.800.233.1234
Intl. Reservations: +1.310.228.1234
Fax: +1.310.551.3355
General: www.centuryplaza.hyatt.com
Reservations: www.centuryplaza.hyatt.com/groupbooking/laxcpipba2008

Parking

Valet Parking: US \$15 per day
Self Parking: US \$15 per day

How to Book Accommodations

To reserve your accommodations, please contact Hyatt Regency Century Plaza Reservations at 1.800.233.1234 for U.S. callers and at +1.310.228.1234 for international callers, and mention the IPBA 2008 Annual Conference. You may also book your reservation online by visiting www.centuryplaza.hyatt.com/groupbooking/laxcpipba2008. A credit card is necessary to make a reservation, but no deposit is required. The credit card will be charged upon hotel check-in. To guarantee room availability, please make your reservation no later than March 31, 2008.

TRAVEL INFORMATION

Los Angeles Overview

Often called L.A., Los Angeles is the largest city in the state of California and the second-largest city in the United States. The city of Los Angeles has an estimated population of 3.8 million, and the five-county area around Los Angeles has an estimated population of 16.4 million. The Los Angeles area is one of the world's focal points of culture, technology, international trade, and higher education, and is home to many world-renowned institutions across a broad range of cultural and professional fields. In addition, the city leads the world in entertainment production, including motion pictures, television, and recorded music.

Helpful Websites About Los Angeles

www.discoverlosangeles.com
www.losangeles225.com

Passport and Visa

All persons entering the United States from overseas, including U.S. citizens, are required to have a passport. For general information about the United States visa process, visit the U.S. State Department's U.S. Visas website, www.travel.state.gov/visa. This will provide you with links to information about visas, including processing time, locations, fees, application forms, border country requirements, and photo requirements. The U.S. Visas website will also provide information for United States Embassies and Consulates worldwide. NOTE: Interview requirements for obtaining a visa may be more stringent than in years past, and visas may take longer to approve. Delegates and accompanying persons requiring a visa to enter the United States are urged to begin the application process as soon as possible.

Visa Waiver Program

The Visa Waiver Program enables nationals of certain countries to travel to the United States for tourism or business for stays of 90 days or less without obtaining a visa. NOTE: Visa waiver travelers from Visa Waiver Program countries must present a machine-readable passport at the U.S. port of entry to enter the U.S. without a visa. For the most updated information about the Visa Waiver Program and a list of eligible countries, please visit: www.travel.state.gov/visa/temp/without/without_1990.

Customs

All individuals traveling into the United States must clear the U.S. Customs and Border Protection Inspection Process. For information on prohibited and restricted items, please visit: www.cbp.gov/xp/cgov/travel/vacation/kbyg/prohibited_restricted.xml.

Invitation Letter

On request, the Conference Executive Producer will send a letter of invitation to participate in the Conference. Invitations are extended specifically to assist participants in obtaining travel funds or appropriate visas and do not imply a commitment to provide financial support. The letter will be forwarded to you upon confirmation of your registration. If you require a letter of invitation, please contact the Conference Executive Producer via email at info@ipba2008.com.

Suggested Arrival Date

It is recommended that Conference attendees arrive in Los Angeles no later than Saturday, April 26, 2008. This will enable attendees to relax and familiarize themselves with the Hyatt Regency Century Plaza before the Conference registration and Welcome Cocktail Reception on Sunday, April 27, 2008. In addition, a variety of tours and activities available to both delegates and accompanying persons will be offered on Sunday prior to the Welcome Cocktail Reception.



Airports in Southern California

Los Angeles International Airport (LAX) is the largest and closest airport to the Hyatt Regency Century Plaza.

Other airports around the area include:

- Burbank Airport
- John Wayne Airport
- Long Beach Airport
- Ontario Airport

Airport Transportation

Shuttles, taxis, buses, and limo services are available ground transportation options. Conference attendees may arrange for car service through the Hyatt Regency Century Plaza concierge by calling +1.310.551.3301. The cost from LAX to the Hyatt Regency Century Plaza is approximately US \$100.

Super Shuttle offers 24-hour service, seven days a week from all local airports. Look for blue vans with yellow lettering marked "Super Shuttle" at the shared ride island outside the baggage claim area. The cost from LAX to the Hyatt Regency Century Plaza is approximately US \$15.

Taxi service can be found curbside in front of each terminal under the sign indicating Taxis. Passengers will be presented with a ticket stating typical fares to major destinations. The cost from LAX to the Hyatt Regency Century Plaza is approximately US \$40. Guests traveling from the hotel to the airport or to other local destinations may arrange transportation with the Hyatt Regency Century Plaza concierge.

Travel Insurance

The purchase of travel insurance is strongly recommended. Travel insurance, in many cases, may cover unforeseen or uncontrollable situations that might affect your ability to attend an event.

Currency

The accepted form of currency in the United States is the U.S. dollar (\$) and U.S. cent (¢). Decimal currency is used in the United States with the dollar as the basic unit (\$1 = 100¢). Notes come in \$1, \$5, \$10, \$20, \$50, and \$100 bills. Coins come in 1¢, 5¢, 10¢, and 25¢ denominations. Currency exchange facilities are available in most banks and airports and operate during normal business hours. Currency exchange services are also available at the front desk of the Hyatt Regency Century Plaza.

Credit Card

Credit cards are accepted at most restaurants and shops. The most widely used credit cards are MasterCard, Visa, and American Express. Selected establishments also accept Discover and Diners Club. JCB is typically not accepted in the U.S.

Sales and Hotel Tax

A Los Angeles County sales tax of 8.25% is charged on all items purchased in retail stores and restaurants. Sales tax is not charged on hotel rooms; however, a 14% hotel transient occupancy tax is added to each bill.



Gratuities

A gratuity charge is not automatically included in the bill at restaurants and other establishments, unless it is noted on the check. Including a gratuity is voluntary, but adding a 15% to 20% tip for restaurant and taxi service is customary.

Banking Services

Banks are generally open from 9:30 AM to 4:30 PM Monday through Friday.

Emergency Phone Numbers

Ambulance, Fire, Police: 911

Language

The official language of the IPBA 2008 Annual Conference is English.

Metric Conversions

1 foot = 0.3 meter
1 meter = 3.28 feet
1 mile = 1.6 kilometers
1 kilometer = 0.62 mile
1 pound = 0.45 kilogram
1 kilogram = 2.2 pounds
1 gallon = 3.784 liters
1 liter = 0.26 gallon

Attire Definitions

Business Attire for Men: Business suit or collared dress sport jacket with tailored slacks, collared shirt with necktie, and closed-toe leather dress shoes.

Business Attire for Women: Tailored dress, business suit or pantsuit, or blouse with skirt or tailored slacks, and dress shoes.

Business Casual Attire for Men: Collared shirt with or without sports jacket, or turtleneck shirt with sports jacket, slacks, and closed-toe dress shoes.

Business Casual Attire for Women: Dress or pantsuit, or blouse, top or sweater with skirt or tailored slacks, and dress shoes.



Time Zone

During the month of April, Los Angeles is in the Pacific Daylight Time (PDT) Zone, which is 7 hours behind Greenwich Mean Time (GMT-7).

Climate

During the months of April and May, the temperature range is from 13 to 23 degrees Celsius (56 to 74 degrees Fahrenheit).

Electrical Current

The electrical current in the U.S. is 110 volts A/C. Flat plugs are standard. It is recommended that you purchase required converters before entering the country.

Telephones

All phone calls made to U.S. telephone numbers from a U.S. telephone number require 11-digit dialing: 1, followed by the three-digit area code of the city being called, followed by the seven-digit phone number.

Smoking

In Los Angeles, smoking is prohibited in most public buildings, including restaurants. Smoking rooms may be requested during check-in at the Hyatt Regency Century Plaza. Smoking rooms are subject to availability.

Postal Services

Post offices are open from 9:00 AM to 5:00 PM Monday through Friday. Postage stamps are available for purchase at the front desk of the Hyatt Regency Century Plaza.

SPONSOR AND EXHIBITOR OPPORTUNITIES

SPONSORSHIP OVERVIEW

Corporations, financial institutions, accounting firms, law firms, and other service firms in the legal industry are invited to promote their brand by purchasing a specially designed Gold, Silver, or Bronze Sponsorship Package. Additionally, the IPBA 2008 Conference Executive Producer will collaborate with corporate sponsors to customize distinctive sponsorship opportunities that optimize each sponsor's specific marketing, sales, and branding objectives.

If you would like more information regarding sponsorship for the IPBA 2008 Annual Conference, please contact the Conference Executive Producer at info@ipba2008.com.

SPONSORSHIP PACKAGE SUMMARY

Sponsorship Entitlements	Gold US \$10,000	Silver US \$5,000	Bronze US \$2,500
Logo/name placement in the registration brochure	•	•	•
Logo/name placement on the sponsor recognition page of the www.ipba2008.com website	•	•	•
Logo/name placement in the on-site Conference sponsor recognition signage	•	•	•
Logo/name placement in the Conference binder sponsor section	•	•	•
Presentation in the "Sponsor Highlight" section of the www.ipba2008.com website	•		
Feature spot in one email communication to the IPBA global membership	•		
Black-and-white advertisement in the Conference binder	Full page	Full page	Half page
Exhibitor space discount	US \$500	US \$250	
# Promotional flyers in the Conference bag	1		
# Invitations to the Welcome Cocktail Reception	2	1	
# Invitations to the Getty Center Gala	2	1	
# Invitations to the Sony Studios Farewell Gala	2	1	

EXHIBITOR OVERVIEW

Exhibition opportunities are available in conjunction with the IPBA 2008 Annual Conference. The exhibition will provide companies actively involved in providing services to the legal profession with the opportunity to showcase their products and services to a diverse range of decision-makers from countries throughout the Asia-Pacific region.

EXHIBITOR ENTITLEMENTS

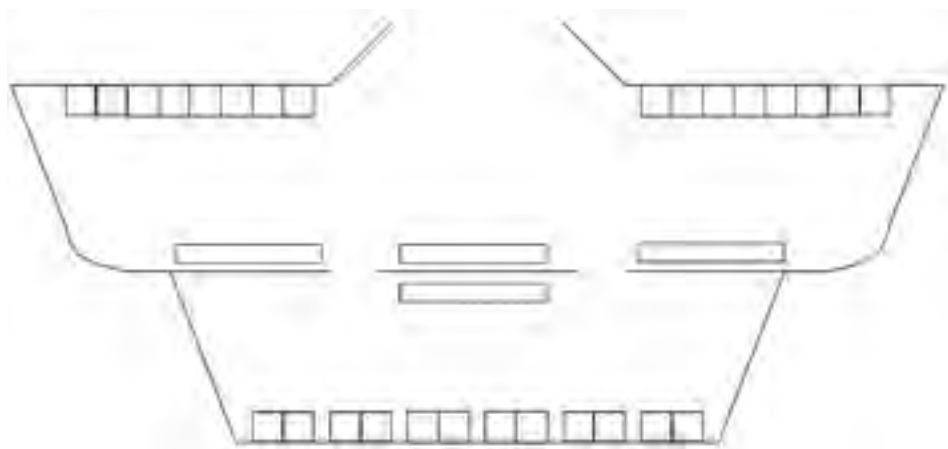
Exhibition Package	Fees and Discounts
Standard 10' x 10' Booth <ul style="list-style-type: none"> • Pipe and drape scheme • 6' table with table drape • Two (2) chairs • Wastebasket • Sign with company/organization name • Logo included in Conference Binder* • One (1) pass for the exhibition hall, which includes: <ul style="list-style-type: none"> ◦ Breakfasts on April 28-30, 2008 ◦ Coffee breaks on April 28-30, 2008 ◦ Lunches on April 28-29, 2008 	US \$2,650
Additional Exhibitor Pass	US \$300
Gold Sponsor Discount	US \$500
Silver Sponsor Discount	US \$250

*Logo (.JPG file/300 DPI) must be received by March 15, 2008, for inclusion in the Conference Binder

EXHIBITOR DATES AND TIMES

Date	Time
Monday, April 28, 2008	8:00 AM – 5:00 PM
Tuesday, April 29, 2008	8:00 AM – 5:00 PM
Wednesday, April 30, 2008	8:00 AM – 1:00 PM

EXHIBITION HALL LAYOUT



SPEAKER PROFILES

Barbara Adachi, Principal Deloitte Consulting LLP, United States



Barbara Adachi leads Deloitte's Women's Initiative as well as Deloitte Consulting's Human Capital Practice in the West,

and is responsible for operations, financial performance, sales, and delivery of services across the West region. Ms. Adachi was named one of the "100 Most Influential Women in Business" by *San Francisco Business Times* 2003-2007.

Jonathan Ahn, Principal Semmes Bowen & Semmes, PC, United States



Jonathan Ahn concentrates his practice on advising U.S. and international clients in connection with business and

corporate transactions, particularly involving intellectual property assets and subject matters. Mr. Ahn is a registered court-appointed mediator in Maryland and is actively involved in resolving business and corporate disputes through ADR in Maryland.

Bruce Aitken, Managing Partner Aitken Berlin, LLP, United States



Bruce Aitken is president of the Homeland Security Industries Association (HSIA) and co-chairman of HSIA's umbrella

group, the Global Alliance for Homeland Security. Mr. Aitken has also served as the only private-sector representative on the Department of Homeland Security's Task Force on Development of Counterterrorism Guidelines for State and Local Governments.

Judith Bain, Vice President, Legal Affairs and General Counsel Epson America, Inc., United States



Judith Bain is vice president, legal affairs and general counsel for Epson America, Inc.,

the North and Latin American sales, marketing, and customer service subsidiary of Seiko Epson Corporation. Ms. Bain founded the Epson America Legal Affairs Department in 1986. Prior to joining Epson America, Ms. Bain was in private practice in Illinois and California.

Kilian Bälz, Research Fellow Harvard Law School, United States



Kilian Bälz was a partner in the Frankfurt office of Gleiss Lutz until 2007, specializing in international M&A and capital

markets work with a particular focus on the Middle East. Currently, Dr. Bälz is a research fellow at Harvard Law School. He has extensive experience in implementing Islamic financing structures in Europe and has published widely on Middle Eastern commercial law and Islamic finance.

R. Paul Barkes, Counsel Kaye Scholer LLP, United States



Paul Barkes is counsel in Kaye Scholer's Corporate & Finance Department, specializing in aviation finance and leasing.

He has represented aircraft lessors in lease and finance transactions throughout the world, including operating leases, sales, acquisitions, acquisition financings, and securitizations.

Rahmat Bastian, Partner BTPartnership, Indonesia



Rahmat Bastian is an insolvency and restructuring expert who regularly negotiates clauses in insolvency or restructuring

documentation or litigates and mitigates issues for debtors, shareholders, creditors, creditors' steering committees, buyers or sellers, and agents or arrangers. He was selected as the "2002 Business Lawyer of the Year" by one of Indonesia's leading business company magazines.

David Bateson, Partner Mallesons Stephen Jaques, Hong Kong



David Bateson specializes in construction projects and dispute resolution. His work involves all forms of project

documentation and dispute resolution including arbitration, adjudication, litigation, and mediation. He has been named as a leading arbitrator in the *International Who's Who of Commercial Arbitrators*.

Sumant Batra, Managing Partner Kesar Dass B & Associates, India



Sumant Batra advises on a broad spectrum of foreign direct investment issues and corporate and commercial transactions,

and has an established reputation in all aspects of domestic, international, and offshore banking and finance. He is an international expert on insolvency and restructuring and acts as a consultant to the World Bank, Asian Development Bank, and Organisation for Economic Co-operation and Development (OECD) in the South Asia region.

Stephan Becker, Partner
Pillsbury Winthrop Shaw Pittman LLP,
United States



Stephan Becker is the leader of Pillsbury Winthrop Shaw Pittman's International

Trade Practice. His practice encompasses a broad range of legal subjects in the areas of international trade regulation and international law. Mr. Becker works with companies in a wide variety of industries, including semiconductors, aerospace, electronics, software, energy, and agriculture.

John Bishop, Senior Partner
Pinsent Masons, China



John Bishop is the senior resident partner responsible for Pinsent Masons' Asia Pacific Practice and the chief

representative of the Beijing office. He is a leading practitioner in all aspects of law relating to construction and engineering and has been recognized in *Chambers Asia*, *Chambers UK*, *Asia Pacific Legal 500*, and *UK Legal 500*.

Juliet Blanch, Partner
McDermott Will & Emery LLP,
United Kingdom



Juliet Blanch is a partner in the law firm of McDermott Will & Emery UK. She is head of the International Dispute Resolution

Group, where she represents clients across a range of industry sectors. The disputes in which she has acted have brought her before institutional and ad hoc tribunals in a number of jurisdictions and involved a variety of governing laws.

Forrest Booth, Member
Severson & Werson, United States



Forrest Booth is a member in Severson & Werson's Insurance Litigation Group. Mr. Booth also has experience in all areas

of admiralty and maritime litigation. His expertise includes marine insurance, cargo in transit, marine hull, aviation liability, ship repairers' legal liability, control of well, and charterers' liability.

Campbell Bridge SC, Senior Counsel
Maurice Byers Chambers, Australia



Campbell Bridge is a senior counsel with Maurice Byers Chambers. He has worked as a barrister for over 30 years in

the area of insurance litigation, particularly in the fields of medical, product liability, and commercial insurance, as well as mediation and arbitration work. Mr. Bridge also writes and photographs extensively for a number of cultural and travel magazines about many aspects of Asia.

Denis Brock, Partner
Clifford Chance LLP, United Kingdom



Denis Brock has handled heavy commercial litigation and arbitration since 1983. His specialties include insurance,

reinsurance, PRC joint venture and related disputes, professional negligence claims, corporate litigation, and international trade. Mr. Brock is also involved with transactional work, primarily advising banks on insurance and litigation issues arising in transactions.

Tim Bruinsma, Partner
Fulbright & Jaworski LLP, United States



Tim Bruinsma is a corporate and business attorney with extensive experience in international transactions.

He has a broad legal practice that emphasizes corporate finance, mergers, acquisitions, joint ventures, and project finance matters. Mr. Bruinsma's practice also includes real estate, licensing, distributorships, and other commercial transactions, particularly in an international context.

Philip L. Bruner, Arbitrator and Mediator,
Director
JAMS, United States



Philip Bruner is the immediate past president of The American College of Construction Lawyers and co-author of the seven-

volume American legal treatise, *Bruner & O'Connor on Construction Law*. He is a recipient of the highest award of the American Bar Association's Forum on the Construction Industry for "exceptional service to the Construction Industry, the Public and the Legal Profession."

Raymond J. Burke, Jr., Partner
Burke & Parsons, United States



Raymond Burke, partner at Burke & Parsons, is a 1965 graduate of the University of Notre Dame and a 1968

graduate of Fordham University School of Law. Mr. Burke served as an officer in the U.S. Navy for three years before joining Burke & Parsons. He is also a member of the bars of various U.S. District Courts and U.S. Courts of Appeals, and the U.S. Supreme Court.

SPEAKER PROFILES

Michael Butler, Tax Partner Finlaysons, Australia



Michael Butler is head of Finlaysons' Tax & Revenue practice area. He has more than 20 years of experience

advising clients on tax matters. Mr. Butler established an international practice from an Adelaide base, with a special interest in property taxation, corporate restructurings, international tax matters, and estate and succession planning.

Marcelo Calliari, Partner TozziniFreire Advogados, Brazil



Marcelo Calliari is a partner in TozziniFreire Advogados' Antitrust and International Trade Practice Groups. He was also

commissioner of the Administrative Council for Economic Defense (CADE) from 1998 to 2000. Mr. Calliari has also participated as a member of the official Brazilian delegation at various antitrust negotiations held at the WTO, OECD, FTAA, and MERCOSUR.

Brent Caslin, Partner Kirkland & Ellis LLP, United States



Brent Caslin is a U.S. trained litigation partner with substantial international experience, having lived and worked in Asia,

Europe, and the United States. He manages complex international and domestic disputes from the Los Angeles office of Kirkland & Ellis and spends a significant amount of time near technology centers in Northern California, Western Washington, and Japan.

Jean Paul Chabaneix, Partner Rodrigo, Elías & Medrano Abogados, Peru



Jean Paul Chabaneix specializes in business and corporate law, corporate finance, project

finance, trade finance, banking, mergers and acquisitions, international practice, oil and gas, and aircraft financing. He has vast experience in privatizations. He also specializes in privatization processes and has been appointed as an arbitrator in investment-related dispute settlement proceedings before ICSID.

Rajarshi Chakrabarti, Partner Kochhar & Co., India



Rajarshi Chakrabarti is the resident partner of the Mumbai office of Kochhar & Co., and a corporate commercial lawyer

with an emphasis on transactional and regulatory work. Mr. Chakrabarti's practice includes corporate finance and investments, joint ventures, cross-border acquisitions, divestments and restructuring, corporate governance issues, and banking and commercial contracts.

Mark J. Chandler, Managing Director Invotex Group, United States



Mark Chandler leads IP transactions, valuation, and financing activity for Invotex, a financial and intellectual

property consulting firm. Mr. Chandler has 20 years of experience in development and commercialization of advanced technology including leading corporate ventures for a UK investment firm. He received his MBA from the Wharton School of the University of Pennsylvania.

Cedric Chao, Partner Morrison & Foerster LLP, United States



Cedric Chao co-chairs Morrison & Foerster's international litigation and arbitration practice. His focus is commercial litigation,

international arbitration, and complex criminal matters. He has been named as a "recommended lawyer" for international arbitration by *Chambers USA* in 2007 and by *San Francisco* magazine as a "Northern California Superlawyer."

Audrey Chen, Partner Jun He Law Offices, China



Audrey Chen is a partner at Jun He Law Offices and specializes in foreign investment, banking

and financing, M&A, and general corporate work. She has extensive experience in energy, mining, automobile, retail, real estate, technology, and IP projects. She has advised on various aspects of, and negotiated complicated legal documents in connection with, such projects.

Jeffrey A. Chester, Partner Kaye Scholer LLP, United States



Jeffrey Chester heads Kaye Scholer's wind power practice, focusing on wind energy

development, construction, tax structuring, and project finance. He regularly represents developers, sponsors, lenders, and investors in wind power transactions, and has been centrally involved in the inception and development of the equity, debt, and capital markets for wind power projects.

Atul Y. Chitale, Partner
A. Y. Chitale & Associates,
Advocates & Legal Consultants, India



Atul Chitale has extensive experience in litigation, dispute resolution, and arbitration, including domestic and international litigations and arbitrations. He also has experience in antitrust and competition law matters, particularly in relation to the aviation industry. Mr. Chitale has also been involved in advising clients in aircraft financing, securitization, and registrations in India.

Wilson Chu, Partner
Haynes and Boone LLP, United States



Wilson Chu is head of Haynes and Boone's Asia Practice Group and previously served as head of the firm's Mergers & Acquisitions Practice Group. His practice focuses on mergers, acquisitions, joint ventures, venture capital/private equity investments, and other strategic transactions. Mr. Chu has significant experience in cross-border investments with the Asia-Pacific region and has been recognized by *Lawdragon* 500, *SuperLawyers*, and *Best Lawyers in America*.

William Y. Chua, Partner
Sullivan & Cromwell LLP, Hong Kong



William Chua has broad experience in private equity and M&A transactions, having advised acquirers, targets, financial sponsors, hedge funds, special committees of boards of directors, and investment banking firms in takeovers, auctions, leveraged buyouts, "going private" transactions, divestitures, joint ventures, and strategic investments.

Peter Coles, Partner
Barlow Lyde & Gilbert, Hong Kong



Peter Coles is a dedicated aerospace and aviation insurance lawyer in Barlow Lyde & Gilbert's Aerospace Team. He advises airlines, airports, MROs, manufacturers, and regulatory authorities on a range of multi-jurisdictional claims, and commercial and regulatory matters. Mr. Coles is also a Fellow of the Royal Aeronautical Society.

John W. Craig, Partner
McMillan Binch Mendelsohn LLP, Canada



John Craig has maintained an active business law practice with particular emphasis on mergers and acquisitions, the establishment and expansion of entrepreneurial businesses, and cross-border and international transactions. He established a federal regulatory practice in respect to foreign investment in Canada in the mid-1970s and continues to act on many high-profile and cultural transactions.

Brian C. Dalrymple, Partner
Nixon Peabody LLP, United States



Brian Dalrymple has experience representing foreign and domestic corporations, airlines, and aviation manufacturing clients in the coordination and defense of complex and multidistrict casualty and commercial litigation. He also has extensive experience acting as national and international litigation counsel for some of the largest aircraft and helicopter manufacturers in the world.

Paul Darling QC, Queen's Counsel
Keating Chambers, United Kingdom



Paul Darling specializes in construction, engineering and energy, professional negligence, and procurement law. He has appeared in many high-profile court cases in his field before English courts and has also acted on numerous UK and international arbitrations. Mr. Darling was the Construction Silk for the year for 2006-2007 and is the current head of the Bar Council's Committee on Public Access.

Janine M. Dascenzo, Associate
General Counsel
General Electric Company, United States



Janine Dascenzo is associate general counsel of General Electric Company. Prior to joining GE, Ms. Dascenzo was in private practice, most recently with Squire Sanders & Dempsey. In 1998, Ms. Dascenzo joined the GE Aircraft Engines' litigation group until 2003 when she was named general counsel of GE's factory automation division. She was also GE's managing counsel for Legal Operations from 2005 to 2007.

Dushyant Dave, Senior Advocate
Supreme Court of India, India



Dushyant Dave, senior advocate in the Supreme Court of India at New Delhi, is one of the leading practitioners in the field of commercial and corporate laws, and also commands a wide practice in the field of arbitration. Mr. Dave is a member of the ICCA Council and the National Legal Services Authority, a statutory body created by Parliament.

SPEAKER PROFILES

Jeffrey S. Davidson, Senior Partner Kirkland & Ellis LLP, United States



Jeffrey Davidson is an accomplished trial lawyer, having tried more than 40 cases in courts across the U.S. and argued appeals before the U.S. Supreme Court and a dozen other appellate courts. He has also appeared before domestic and international arbitration panels such as the AAA and LCIA. He was selected in the 2005-2008 editions of *Best Lawyers in America* in the area of commercial litigation.

Pieter de Ridder, Partner Loyens & Loeff, Singapore



Pieter de Ridder specializes in Asian tax planning and covers a wide variety of business sectors, ranging from financial institutions, venture capital businesses, investment fund managers, trading companies, real estate developers, manpower service companies, and construction companies to retail businesses operating in one or more Asian countries.

Susan de Silva, Partner Alban Tay Mahtani & de Silva, Singapore



Susan de Silva is a founding partner of Alban Tay Mahtani & de Silva and heads the firm's Corporate and Commercial Group. Ms. de Silva has 23 years of experience as a corporate and commercial lawyer in Singapore and England, and was named as a leading individual for corporate/mergers and acquisitions in *Asia Pacific Legal 500* and *AsiaLaw Leading Lawyers*.

Valeriano R. del Rosario, Partner Del Rosario Bagamasbad & Raboca, Philippines



Valeriano del Rosario heads the maritime/admiralty and litigation division at Del Rosario Bagamasbad & Raboca.

Mr. del Rosario is also an associate professor of transportation law at the Ateneo de Manila University School of Law, and is the Board Secretary of the Department of Labor's National Maritime Polytechnic.

Michael G. DeSombre, Partner Sullivan & Cromwell LLP, Hong Kong



Michael DeSombre has focused his practice on public and private merger and acquisition transactions, leveraged buyouts, and direct investments in mainland China, Hong Kong, Taiwan, and elsewhere in Asia. Mr. DeSombre is recognized as one of the foremost M&A and private equity lawyers in the world by several publications including *Chambers Global*.

Katrina Dewey, Chief Executive Officer Lawdragon Inc., United States



Katrina Dewey is the former editor of the *Los Angeles Daily Journal* where she was credited with transforming a trade-industry publication into a newspaper with broad appeal. Ms. Dewey founded Lawdragon in 2005 to create a new type of legal media that offers news, evaluations of lawyers, and a new approach to marketing lawyers and law firms.

Paolo Di Rosa, Partner Arnold & Porter LLP, United States



Paolo Di Rosa heads the international arbitration practice at Arnold & Porter. Mr. Di Rosa's practice centers on international arbitration matters, including arbitral disputes between investors and states under bilateral investment treaties (BITs) and other investment instruments, and disputes before the International Centre for Settlement of Investment Disputes (ICSID).

Jo-Ellan Dimitrius, Trial Consultant Dimitrius & Associates, United States



Jo-Ellan Dimitrius has evaluated over 10,000 jurors, witnesses, lawyers, and judges during trial, and has served as the jury consultant in many high-profile cases including the Night Stalker, Rodney King, and O.J. Simpson. Her ability to understand and predict the behaviors of jurors, witnesses, lawyers, and judges led to her being nicknamed "The Seer" by *The American Lawyer* magazine.

Nelson G. Dong, Partner Dorsey & Whitney LLP, United States



Nelson Dong is a partner in Dorsey's corporate group, and co-chair of the firm's Technology Commerce Practice Group and Asian Law Practice Group. He represents technology companies in venture capital financing, technology transfer and distribution agreements, and other domestic and international technology and intellectual property transactions.

Charles S. Donovan, Partner
Sheppard Mullin Richter & Hampton LLP,
United States



Charles Donovan's practice focuses on international and domestic finance, leasing, and related arbitration and litigation, with particular emphasis on transportation matters. He has extensive experience in the negotiation of international agreements. He has lectured and written on topics relating to international law, ocean shipping, air and land transport, satellites, and cross-border leasing.

Atul Dua, Senior Partner
Seth Dua & Associates, India



Atul Dua specializes in cross-border transactions and international taxation and trade. He has contributed to various publications on the subjects of investing in India, taxation, international trade, and telecom. He has also recently co-authored a book, *Joint Ventures and M&A – Legal & Tax Aspects*, which has been published by Butterworths.

Marsha-laine Dungog, Senior Counsel
Liner Yankelevitz Sunshine & Regenstreif
LLP, United States



Marsha-laine Dungog advises U.S. and foreign-based clients on the international, federal, state, and local tax ramifications of various business transactions, including planning advice with respect to mergers, acquisitions, joint ventures, debt issuance, and restructuring. She has extensive experience in corporate tax, international tax, financial products, and tax controversy areas.

Lindsay East, Partner
Reed Smith LLP, United Kingdom



Lindsay East was Reed Smith's head of the Shipping Group for six years. His practice includes all aspects of dry shipping law, including charterparty disputes, bill of lading disputes, sale and purchase disputes, shipbuilding disputes acting for both buyers and for yards, drafting of long-term charterparties, drafting and interpretation of Club Rules, war risk insurance, and marine insurance.

Ira A. Eddymurthy, Partner
Soewito Suhardiman Eddymurthy Kardono,
Indonesia



Ira Eddymurthy is one of the founding partners of Soewito Suhardiman Eddymurthy Kardono, and specializes in capital markets and banking law, finance, including project finance, and tax law. She has been recognized as one of the top corporate, commercial, and mergers and acquisitions lawyers in Indonesia by *Chambers Global*.

David Elenbaas, Chief Professional Partner
McMillan Binch Mendelsohn LLP, Canada



David Elenbaas is the chief professional partner and head of the Employment and Labour Relations and Business Immigration Sections of McMillan Binch Mendelsohn. For almost 25 years he has provided advice and counsel to multinational organizations on all aspects of employment and labour relations and the cross-border movement of personnel.

Alec Emmerson, Partner
Clyde & Co LLP, United Arab Emirates



Alec Emmerson moved into the shipping and insurance legal sector upon joining Clyde & Co in 1977. He ran the Hong Kong office from 1983-1996 and moved to Dubai in 1999 to head up the Dispute Resolution Group. He is rated as a leading shipping and dispute resolution lawyer, has written many articles for trade publications, and speaks regularly at conferences.

Alejandro A. Escobar, Associate
Latham & Watkins LLP, United Kingdom



Alejandro Escobar specializes in public international law and international arbitration. He was formerly senior counsel at the International Centre for Settlement of Investment Disputes (ICSID) where he handled some of the first investor-state arbitration proceedings ever brought under bilateral investment treaties (BITs) and multilateral treaties for the protection of investment.

Bjoern Etgen, Partner
Beiten Burkhardt, Hong Kong



Bjoern Etgen is head of the China Practice at Beiten Burkhardt. He has substantial experience in advising on all forms of foreign investment in China including large-scale foreign direct investment transactions and M&A transactions. Dr. Etgen has also acted on various arbitration cases involving Chinese parties with China International Economic and Trade Arbitration Commission (CIETAC) and other international arbitration commissions.

SPEAKER PROFILES

William Fitzpatrick, Corporate Counsel Omidyar Network, United States



William Fitzpatrick is the corporate counsel for Omidyar Network, a mission-based organization committed to

enabling individuals to improve the quality of their lives. Prior to joining Omidyar Network, Mr. Fitzpatrick worked for the Alabama Capital Representation Resource Center, providing legal assistance to death row inmates in Alabama.

Joseph Fletcher, Partner Holland & Knight LLP, United States



Joseph Fletcher's 17 years of tax experience include advising on all aspects of corporate and partnership taxation. He has

advised both emerging companies and Fortune 500 companies on issues ranging from the establishment of new operations to the cross-border acquisition of foreign corporations by U.S.-based or foreign-based multinational companies.

José Luis de Salles Freire, Partner TozziniFreire Advogados, Brazil



José Luis de Salles Freire is the founding partner of TozziniFreire Advogados and chairman of its Executive Committee. His areas

of expertise include corporate law, capital markets and publicly held corporations, financial markets, mergers and acquisitions, tax planning, finance, and local and international contracts in general.

Marc Frilet, Managing Partner Frilet – Société d'Avocats, France



Mark Frilet focuses on private and public infrastructure as well as mining projects and joint ventures for complex projects

both in France and internationally, with a special focus on major projects in developing nations. He also specializes in all aspects of PPP ventures, in particular BOT concessions and similar schemes.

Ian Gamble, Partner Thorsteinssons LLP, Canada



Ian Gamble specializes in international taxation, mergers and acquisitions, resource taxation, and tax controversy.

His clients include corporations engaged in the telecommunications, mining, oil and gas, and real estate industries at Thorsteinssons. Mr. Gamble was named one of the top 10 tax advisors in Canada by the *International Tax Review* in 1999.

Sarjit Singh Gill, S.C., Senior Counsel Shook Lin & Bok, Singapore



Sarjit Gill is head of the Banking Practice Group and Litigation & Arbitration, Restructuring & Insolvency Practice Group at

Shook Lin & Bok. He practices in the areas of litigation and international arbitration, insolvency and restructuring, and corporate banking. Mr. Gill has consistently been identified as one of Singapore's leading insolvency and restructuring practitioners in a number of international publications such as *Who's Who Legal: Insolvency & Restructuring*.

Michael V. Gisser, Partner Skadden, Arps, Slate, Meagher & Flom LLP, United States



Michael Gisser actively advises clients in a range of industries with respect to mergers and acquisitions and corporate

finance transactions, as well as major firm clients in the real estate, manufacturing, and entertainment industries. The *Los Angeles Daily Journal* listed Mr. Gisser in 2006 as one of California's top "Rainmakers."

Leonard Glass, Partner Lawson Lundell LLP, Canada



Leonard Glass practices in the area of income and commodity taxation and advises both private and public clients primarily on

transactional and corporate reorganizations. A large part of Mr. Glass's practice involves working for clients that carry on business outside of Canada. He has also been involved in business succession planning for many individuals who own and manage their own business.

Susan Hackett, Senior Vice President and General Counsel Association of Corporate Counsel, United States



Susan Hackett joined the Association of Corporate Counsel (ACC) in 1989. While she has

held a number of roles and responsibilities over the years, she is currently focused on ACC's advocacy efforts, corporate pro bono and diversity initiatives, the provision of legal services and counseling to ACC and its board, and the development of new strategic resources benefiting general counsel (CLOs) and ACC's increasingly global membership.

Kevin A. Hall, Partner
Reed Smith LLP, United States



Kevin Hall's practice focuses on banking, including leveraged acquisition finance and syndicated lending, and equipment and facility financing, as well as structured finance, with an emphasis on tax-driven and cross-border transactions involving a wide variety of transportation and industrial equipment.

Hisashi Hara, Partner
Nagashima Ohno & Tsunematsu, Japan



Hisashi Hara is the Japan Jurisdictional Council Member of the IPBA. His principal practices include a variety of

transnational and domestic transactions, with emphasis on real estate acquisitions, development, financing and securitization, M&A, joint ventures, and corporate restructuring.

Sally Harpole, Chartered Arbitrator
Sally Harpole & Co, China



Sally Harpole has advised international clients in all major economic sectors on investment, trade, and dispute resolution

matters in the People's Republic of China since 1977. She is also experienced in handling international arbitration cases, as an arbitrator, in the major Asian centers and in Europe.

H. Stephen Harris, Jr., Partner
Alston & Bird LLP, United States



Steve Harris is chair of Alston & Bird's Antitrust Practice Group. He has represented many multinational corporations in

antitrust litigation and regulatory proceedings, including criminal and civil antitrust cases in the U.S. federal courts, as well as administrative and adversarial proceedings before non-U.S. agencies and tribunals.

Lynn P. Harrison, III, Partner
Curtis, Mallet-Prevost, Colt & Mosle LLP, United States



Lynn Harrison is the co-chairman of the Bankruptcy & Creditors' Rights Department at Curtis, Mallet-Prevost, Colt

& Mosle and a member of the firm's International Trade and Cross-Border Investment Group. He is featured as one of the "leading lawyers on communicating with creditors, analyzing debt and filing for Bankruptcy" by Aspatore Books in *Best Practices for Corporate Restructuring* (2006).

Fred Hawke, Partner
Clayton Utz, Australia



Fred Hawke has extensive legal and practical experience in insurance law, claims management, and insurance

company operations. He is extensively engaged in insurance and reinsurance issues involving major projects, the HIH collapse, captive insurers, terrorism, and the risk management consequences of the changing world order.

Sam E. Headon, Research Fellow
Stanford Program on Energy and Sustainable Development, United States



Sam Headon is a SPILS fellow at Stanford Law School where he is currently preparing a thesis on international climate change and

emissions trading regimes. Prior to coming to Stanford, Mr. Headon specialized in finance, energy, and environmental law in Clifford Chance's International Environmental and Climate Trading team.

Stephen J. Hirschfeld, Partner
Curiale Dellaverson Hirschfeld & Kraemer, LLP, United States



Stephen Hirschfeld is a partner at Curiale Dellaverson Hirschfeld & Kraemer. He is also the CEO of the Employment Law Alliance,

the world's largest network of labor and employment lawyers. His practice involves labor and employment law on behalf of multinational companies.

Ashley M. Howlett, Partner
Jones Day, China



Ashley Howlett leads the Jones Day Greater China Construction Practice. His practice is concentrated on

construction and engineering issues connected with infrastructure and major projects. Mr. Howlett's experience includes representation of a broad range of clients, including owners, contractors, and design professionals throughout Asia.

Jami Hubbard, Program Legal Counsel
International Development Law Organization, Italy



Jami Hubbard is a legal counsel and manager of the International Development Law Organization's (IDLO) Microfinance Program.

Prior to joining IDLO, Ms. Hubbard worked as an international commercial lawyer for Studio Legale Cernelutti, where she assisted medium-sized Italian corporations expanding into foreign markets.

SPEAKER PROFILES

John M. Huff, Managing Director and Strategic Claims Officer
Swiss Re America, United States



John Huff serves as a managing director and strategic claims officer for Swiss Re. He joined Swiss Re with the 2006 acquisition of GE Insurance Solutions, where he served in a variety of regional and global claim leadership roles since 1998 including Claims Counsel, Property Claims Manager for Europe & Asia, Global Run-Off Claims Manager, and Leader of Strategic & Emerging Claims.

Dominic Hui, Partner
Vi vien Chan & Co., China



Dominic Hui has represented multinational groups in global litigation involving shareholders' disputes and commercial transactions in which intellectual property rights are aggressively pursued or defended. Mr. Hui has over a decade of experience in dispute resolution, and has been identified by *Asia Law & Practice* as one of Asia's leading lawyers in dispute resolution.

Ronald D. Husdon, Shareholder
Greenberg Traurig, LLP, United States



Ronald Husdon represents and counsels both domestic and foreign corporations and financial institutions in a broad range of corporate matters, including mergers and acquisitions, expansion strategies, corporate divestitures, joint ventures, general corporate and commercial matters, real estate, and finance. He regularly represents foreign clients with respect to all forms of international commerce.

Boh Young Hwang, Partner
Bae, Kim & Lee LLC, Korea



Boh Young Hwang is a partner in the IP Practice Group at Bae, Kim & Lee. She has served as lead counsel in many major and well-known IP cases in Korea, including the 1995 Supreme Court case regarding Samsung's laser print cartridge, which recognized indirect patent infringement for the first time in Korea.

Ignatius Hwang, Partner
Freehills, Singapore



Ignatius Hwang currently heads Freehills' Energy & Resources Practice in Singapore. He has over 15 years of international experience as an energy and resources lawyer and has worked on energy and infrastructure projects in Australia, India, China, Thailand, Malaysia, Singapore, Indonesia, the Philippines, and the Middle East.

John Iino, Partner
Reed Smith LLP, United States



John Iino is the firmwide leader of Reed Smith's Corporate & Securities Practice Group. He has substantial experience representing U.S., Asian, Canadian, and multinational companies in a wide variety of corporate, financial, and commercial transactions, including emerging and high-tech/biotech companies, private placements and public offerings, private equity transactions, and cross-border financings.

Masahisa Ikeda, Partner
Shearman & Sterling LLP, Japan



Masahisa Ikeda is a partner in Shearman & Sterling's Capital Markets Group and the managing partner of the firm's Tokyo office. Mr. Ikeda has extensive experience representing Japanese issuers and underwriters in registered global offerings, listings, and global private placements.

Jaime Irrarrazabal, Partner
Philippi, Yrarrázaval, Pulido & Brunner, Chile



Jaime Irrarrazabal, senior partner of Philippi, Yrarrázaval, Pulido & Brunner, specializes in international legal transactions, arbitration, and business law. He served as vice dean at the University of Chile Law School, and has been Professor of Taxation, International Transactions, and Arbitration. He has authored several publications on foreign investments, taxation, trade agreements, and arbitration.

Wendy Jacobs, Partner
Dibbs Abbott Stillman, Australia



Wendy Jacobs has more than 10 years of experience in banking and commercial litigation. She has developed specialized expertise in corporate recovery and reconstruction of insolvent enterprises, acting for financial institutions and voluntary administrators, receivers, provisional liquidators, and trustees. Her practice encompasses both the commercial and litigation aspects of insolvency.

Gonzalo Jiménez, Associate
Cariola Díez Pérez-Cotapos & Cía. Ltda., Chile



Gonzalo Jiménez is an associate at Cariola Díez Pérez-Cotapos. Mr. Jiménez has focused on the area of economic administrative law, energy and utilities, and other regulated activities, and has participated in bids for the purchase of utility companies, participated in litigations involving electricity law, and provided advice to oil companies, non regulated electricity customers, and other clients in the field.

Doug Jones AM, Partner
Clayton Utz, Australia



Doug Jones is an international infrastructure and dispute resolution lawyer and heads Clayton Utz's Major Projects, International Arbitration, and Construction Practices. Mr. Jones's experience includes acting as counsel and arbitrator in major international arbitrations. He also has had extensive experience in PPP and PFI projects.

Youngjin Jung, Partner
Yulchon Attorneys at Law, Korea



Dr. Youngjin Jung practices in the areas of antitrust, telecommunications, international trade, and international arbitration, and has acquired extensive experience in the information technology, telecommunications/broadcasting, semiconductor, aviation, and chemical industries. Dr. Jung was a lead counsel in the Microsoft case in Korea.

Sumeet Kachwaha, Senior Partner
Kachwaha & Partners, India



Sumeet Kachwaha has extensive experience in international commercial arbitrations, commercial laws, and infrastructure projects. He has handled landmark cases including the Union Carbide (Bhopal Gas Leak) case, where he worked directly under the team leader, Mr. F.S. Nariman. He has been commended for his "Command of the law" by *Chambers Global*.

Mohanadass Kanagasabai, Partner
Shook Lin & Bok, Malaysia



Mohanadass Kanagasabai frequently appears as counsel in domestic and international arbitrations on a range of disputes including construction, engineering, and commercial claims. His current assignments include an ICC arbitration in an oil and gas dispute with a Geneva seat, and an arbitration in Delhi on a road construction project.

Sidney K. Kanazawa, Partner
McGuireWoods LLP, United States



Sidney Kanazawa has tried cases virtually everyone thought he could not win and has led in major crises, including the largest oil spill in the Port of Los Angeles. In 2007, the publishers of *Los Angeles* magazine recognized him as a Southern California "Super Lawyer" and the Defense Research Institute honored him for co-writing the best article of the year.

Hee Chul Kang, Partner
Yulchon Attorneys at Law, Korea



Hee Chul Kang co-heads Yulchon's Corporate & Finance Group and specializes in corporate general, M&A, and finance. He has represented many major multinational and Korean corporations such as GE, Standard Chartered Bank, Hyundai Motor Company, and SK Telecom. Mr. Kang was recognized as a leading lawyer in banking and finance and corporate M&A by *Chambers Global* in 2006.

Jeyanthini Kannaperan, Partner
Shearn Delamore & Co., Malaysia



Jeyanthini Kannaperan's principal areas of practice are in banking and insolvency litigation, corporate litigation, and land law. She represents many local and foreign banks, financial institutions, and large multinationals in litigation at the High Court, the Court of Appeal, and Federal Court in Malaysia. Ms. Kannaperan also acts as counsel for solicitors who instruct the firm.

Hideki Thurgood Kano, Partner
Anderson Mori & Tomotsune, Japan



Hideki Kano specializes in labor and employment and currently devotes his practice to collective labor management, individual labor management, labor insurance, social insurance and pension plans, and labor- and employment-related dispute resolution and litigation. He acts on behalf of both Japanese and non-Japanese multinational companies, advising them on all aspects of labor and employment.

Iswahjudi A. Karim, Partner
KarimSyah Law Firm, Indonesia



Iswahjudi Karim is the founding partner of KarimSyah Law Firm. Mr. Karim practices in the areas of arbitration, banking and finance, bankruptcy, capital markets, corporate law, corporate finance, corporate restructuring, finance, joint ventures, M&A, public offerings, and secured transactions, and has published numerous articles on Islamic finance.

R. Bruce Keiner Jr., Partner
Crowell & Moring LLP, United States



R. Bruce Keiner Jr. is head of Crowell & Moring's Aviation Group and has advised clients on virtually all of the major issues and developments in the aviation industry. Mr. Keiner has been recognized as a leading aviation attorney in *Chambers USA* and the *International Who's Who of Business Lawyers*, as well as a "Legal Elite" aviation attorney by *Washington SmartCEO* magazine.

SPEAKER PROFILES

Kevin W. Keyes, Partner Gowling Lafleur Henderson LLP, Canada



Kevin Keyes is a corporate/commercial lawyer with a practice emphasis in the area of real estate development and financing. He has advised clients with respect to land assembly, annexation, purchase, subdivision, re-zoning, development approvals, financing, leasing, management and sale of commercial and institutional projects, as well as public/private sector initiatives.

Jeff Kichaven, Mediator JAMS, United States



Jeff Kichaven has dedicated 12 years to full-time mediation practice concentrating on business-to-business disputes. He has particular expertise in insurance, employment, and intellectual property matters. Mr. Kichaven was recently listed as one of the "Top 30 Neutrals in California" by the *Daily Journal* and was named "2006 Attorney of the Year" in ADR by *California Lawyer*.

Takeshi Kikuchi, Partner Kojima Law Offices, Japan



Takeshi Kikuchi represents multinational companies and Japanese companies in various industries in transnational and domestic matters. He advises on environmental issues in M&A, asset transactions, drafting and reviewing distributorship agreements, licensing agreements for patents, trademarks, copyrights, and handling disputes on intellectual property matters and transaction contract matters.

Doo Sik Kim, Senior Managing Partner Shin & Kim, Korea



Doo Sik Kim specializes in cross-border investments, general corporate transactions, mergers and acquisitions, energy and environment, WTO/GATT and international trade law, and international litigation and arbitration. He has served as a legal advisor to the Ministry of Trade, Industry, and Energy of Korea, and has participated in many governmental negotiations on international trade and environmental matters.

Jenny Kim, Senior Associate Miller & Chevalier Chartered, United States



Jenny Kim specializes in government contracts, government ethics, corporate compliance reviews and training, campaign finance/lobbying laws, and international trade. Prior to joining Miller & Chevalier, she served as a U.S. Presidential Management Fellow and worked for 15 months in the White House Office of Counsel to the President as an ethics advisor and in the Missile Defense Agency.

Ada Ko, Shareholder Lane Powell PC, United States



Ada Ko has broad experience counseling domestic and international clients on all aspects of corporate transactions, including mergers and acquisitions, financing, joint ventures, and other business operations. Her practice emphasizes the tax aspects of cross-border business operations and investment transactions. Ms. Ko was formerly tax counsel to the largest city in the state of Washington.

Masafumi Kodama, Partner Kitahama Partners, Japan



Masafumi Kodama is a partner at Kitahama Partners. Prior to joining Kitahama, Mr. Kodama was a foreign associate with Pillsbury Winthrop. He has recently handled insolvency cases regarding civil rehabilitation, corporate reorganization, and bankruptcy.

Robin Koh, Senior Legal Associate Skrine & Co., Malaysia



Robin Koh's practice focuses primarily on takeovers, mergers and acquisitions, joint ventures, and foreign investment advisory. Mr. Koh has extensive experience in conducting and coordinating legal due diligence exercises in connection with acquisition exercises or for purposes of verifying documents for submission to regulatory authorities involving different types of companies.

Hideki Kojima, Senior Partner Kojima Law Offices, Japan



Hideki Kojima established Kojima Law Offices, a private commercial/corporate law firm in Tokyo, specializing in transnational investment and contractual matters for Japanese and foreign clients, in 1984. His areas of legal expertise include intellectual property, licensing agreements, cross-border arbitration, antitrust law, and outbound investment.

Jan Kooi, Of Counsel Van Mens & Wisselink, Netherlands



Jan Kooi specializes in tax, international taxation, M&A, financial instruments, and transactions with Asia. He has had more than 26 years of experience in taxation worldwide, has published many articles on taxation and tax/treasury-related items, and is a prime tax speaker for Eurofinance.

**David Kreider, Chartered Arbitrator
and General Counsel
Vodafone New Zealand Ltd, Australia**



David Kreider is the general counsel and member of the Executive Leadership Team of Vodafone NZ Ltd. He is a chartered arbitrator and an AMINZ Fellow member, and was awarded a Diploma in International Commercial Arbitration by the Chartered Institute of Arbitrators. Mr. Kreider specializes in IT and technology disputes.

**Catherine M. Krupka, Partner
McDermott Will & Emery LLP,
United States**



Catherine Krupka is a partner in the Energy & Derivatives Practice Group in the Washington, D.C., offices of McDermott Will & Emery. Ms. Krupka represents wholesale energy companies on transactional, regulatory, legislative, and compliance matters related to energy commodities and state and federal greenhouse gas initiatives.

**Robert Y. Kwauk, Partner
Blake, Cassels & Graydon LLP, China**



Robert Kwauk is the office managing partner of the Beijing office. His practice includes assisting Canadian and other international companies investing and doing business in China. He has extensive experience in strategizing, structuring, negotiating, and documenting various transactions, such as mergers and acquisitions, mining, oil and gas, manufacturing, and technology transfer.

**Jeffrey Layman, Senior Associate
Milbank, Tweed, Hadley & McCloy LLP,
Hong Kong**



Jeffrey Layman, senior associate at Milbank, Tweed, Hadley & McCloy, concentrates his practice in the areas of China-related acquisitions, reorganizations and disposals, direct investments, project finance, private equity, intellectual property, and emerging technology ventures. He recently completed a secondment to the International Finance Corporation in Washington, D.C., with a focus on investments in China.

**Edward E. Lehman, Managing Director
Lehman, Lee & Xu, China**



Edward Lehman specializes in the legal aspects of doing business in China. He advises foreign companies on joint ventures, wholly-owned subsidiaries and holding companies, technology licensing, engineering and construction projects, and the financing of such projects, as well as the protection of intellectual property rights in transactions and projects in China.

**Yabo Lin, Partner
Sonnenschein Nath & Rosenthal LLP,
United States**



Yabo Lin, partner in Sonnenschein's Corporate Practice Group, chairs the firm's Asia Pacific Practice. He has counseled clients on domestic and international mergers and acquisitions, securities matters, venture capital, and licensing transactions. In 2005, Mr. Lin was appointed to the Asia Law Initiative Council where he continues to serve with Justice Anthony M. Kennedy of the U.S. Supreme Court.

**Mark V. Lindsay, Associate
Johnston Barton Proctor & Rose LLP,
United States**



Mark Lindsay's primary areas of practice include entertainment law and general civil litigation. Mr. Lindsay has served as counsel on the largest telecommunications/broadband merger in history, and advised on antitrust concerns relating to advertising, branding, press relations, and other corporate matters.

**Bruce Lloyd, Partner
Clayton Utz, Australia**



Bruce Lloyd is a partner in the National Competition Group of Clayton Utz. He advises both private and public sector organizations on competition law aspects of mergers and acquisitions, restrictive trade practices under Part IV, access issues under Part IIIA, and consumer protection issues under Part V of the Trade Practices Act.

**Vi Ming Lok, S.C., Partner
Rodyk & Davidson LLP, Singapore**



Vi Ming Lok is a partner in Rodyk & Davidson's Litigation & Arbitration Practice Group and heads the firm's Aviation Practice. Mr. Lok is one of the world's leading aviation practitioners and is consistently named in recent consecutive editions of the *International Who's Who of Aviation Lawyers*.

**Cheryl Chengyu Luan, Partner
Lifang & Partners, China**



Cheryl Luan specializes in international trade and has extensive experience advising and assisting foreign clients in the structuring of their foreign direct investment projects, M&A, and antitrust issues. She has been actively involved in representing a diverse range of multinational companies and foreign enterprises with their investment projects in China.

SPEAKER PROFILES

Todd O. Maiden, Partner
Reed Smith LLP, United States



Todd Maiden's practice focuses on environmental matters, including litigation, regulatory counseling, and support of numerous corporate and real estate transactions. He regularly represents clients before federal and state agencies on a variety of hazardous waste, water, air, and NEPA/CEQA issues and also advises on certain international environmental issues.

Susan G. Manch, Principal
Shannon & Manch, LLP, United States



Susan Manch is a principal in the consulting firm of Shannon & Manch. Her practice focuses on lawyer development, helping legal employers build comprehensive approaches to developing talent. Ms. Manch helps firms identify key issues and set goals that mesh with a strategic plan and guides them in the development and implementation of practical solutions.

Shourya Mandal, Partner
Fox Mandal Solicitors & Advocates, India



Shourya Mandal is a partner at Fox Mandal and deals with various types of corporate and commercial matters. He has been named as a leading individual in the field of corporate/M&A matters by *Asia Pacific Legal 500* and as a leading real estate lawyer in the *International Who's Who of Real Estate Lawyers*.

Lisa M. Marchese, Partner
Dorsey & Whitney LLP, United States



Lisa Marchese's litigation practice emphasizes trial of complex cases involving products liability, contract disputes, construction claims, and white-collar criminal defense. She has tried to verdict over 100 jury trials in state and federal court combined. Ms. Marchese was recognized in *Who's Who in American Law* in 2007-2008.

Stephen Marsh, Partner
Luce, Forward, Hamilton & Scripps LLP, United States



Stephen Marsh, partner and chair of Luce Forward's Environmental Practice Group, specializes in hazardous waste and toxic tort litigation, insurance coverage counseling and litigation related to environmental claims, coordination of site assessments and remediation with consultants and regulatory agencies, and advising businesses and property owners on these and related issues.

Susumu Masuda, Partner
Mori Hamada & Matsumoto, Japan



Susumu Masuda specializes in international financial and investment transactions, with particular focus on aircraft lease and finance, cyber laws, and related dispute resolution. He has written and lectured on legal topics involving aircraft finance and its taxation and practices.

Sandra McCandless, Partner
Sonnenschein Nath & Rosenthal LLP, United States



Sandra McCandless represents management in all aspects of labor and employment and has represented employers in the technology, banking, insurance, hotel, manufacturing, automotive, food, trucking, retail, garment, maritime, and trade industries in matters ranging from employment contract drafting and collective bargaining negotiations to wrongful termination and discrimination litigation.

Carmen McElwain, Partner
Maddocks, Australia



Carmen McElwain specializes in tax litigation, dispute resolution, and administrative law. She currently leads the Tax Dispute Practice and delivers effective management of clients' tax compliance issues designed to give the client control of their tax office relationship by practicing "proactive compliance."

Kevin McFarlane, Managing Director
Deloitte & Touche Corporate Finance LLC, United States



Kevin McFarlane has over 15 years of investment banking experience advising both public and private entities on strategic and financing initiatives with emphasis on mergers and acquisitions, divestitures and the raising of equity, hybrid equity, and debt capital. He has served as a lead advisor for companies across a broad spectrum of industries.

**Mark S. McKain, Principal Counsel
and Manager of Claims
Bechtel Corporation, United States**



Mark McKain works on construction claims brought by and against Bechtel Co. globally, including claims arising out of airports, power plants, pharmaceutical plants, ore processing facilities, gas processing facilities, and petroleum processing facilities. He has also served as an associate general counsel at Washington Group International and Raytheon Engineers & Constructors.

**Malcolm S. McNeil, Partner
Carlsmith Ball LLP, United States**



Malcolm McNeil has 23 years of experience in litigation, mediation, corporate and corporate formation, general business, employment, real estate, and insurance matters. He has participated in cross-national negotiations and has established a network of colleagues across the globe who are available to assist clients in foreign countries as the need arises.

**Harry Melkonian, Principal
Melkonian & Co., Australia**



Harry Melkonian's practice specializes in international trademark, copyright, and defamation law. He represents publishing and media clients in different parts of the world and is regularly involved in both litigation and alternate dispute resolution concerning intellectual property and media issues on the Internet as well as traditional markets.

**Mark Mihanovic, Partner
McDermott Will & Emery LLP, United States**



Mark Mihanovic heads McDermott Will & Emery's Silicon Valley Corporate Practice and serves as corporate liaison partner in the firm's strategic alliance with MWE China Law Offices. His practice is focused on the areas of corporate finance, and mergers and acquisitions involving companies in a broad range of industries.

**Ann Miller, Partner
Nixon Peabody LLP, United States**



Ann Miller's practice includes counseling and dispute resolution (litigation, arbitration, and mediation) for foreign and domestic clients, particularly in the hospitality/cruise, maritime, and insurance industries, in a variety of matters, such as general commercial, employment, technology, and risk management. She is a trained mediator and arbitrator.

**Dan Miller, Director
Screen Capital International, United States**



Dan Miller is a director of Screen Capital International (SCI). His primary areas of responsibility include overseeing the company's entertainment lending and advisory business segments, which include mezzanine lending for independent film production and originating structured "slate" financing vehicles for leading producer and agency clients.

**Kaori Miyake, Senior International Counsel
Federal Express Corporation, Japan**



Kaori Miyake has been the international counsel for Federal Express Corporation, North Pacific Region, since 1999. She has advised FedEx on a broad range of legal issues in Japan, Korea, Guam, and Saipan, including contracts, claims and litigation, employment and labor, marketing and communications, corporate matters, regulatory compliance, and government affairs.

**Norliza Mohammed, Partner
ARSA Lawyers (Abdul Raman Saad & Associates), Malaysia**



Norliza Mohammed, partner and head of the Islamic Practice Group at ARSA Lawyers, has invaluable experience in advising local and foreign individuals, companies, housing developers, local authorities, state government, banks, and financial institutions in corporate commercial transactions including all aspects of property and real estate work such as privatization and joint-venture agreements.

**David Molner, Managing Director
Screen Capital International, United States**



David Molner is the founder and managing director of Screen Capital International (SCI), a media finance specialist based in Los Angeles. SCI provides gap financing in the single picture business, structures and funds multi-picture or "slate" arrangements, and has been a leader in both foreign and domestic tax financings for motion pictures, with over US \$6 billion in transactions successfully executed.

SPEAKER PROFILES

Akiko Monden, Associate TMI Associates, Japan



Akiko Monden specializes in employment law, environment law, and mergers and acquisitions. Most of Ms. Monden's work involves international transactions or disputes. Ms. Monden co-authored *Handling Environmental Pollution and Social Insurance Risks in M&A Transactions* (December 2004).

Roberta Montafia, Principal Roberta Montafia Consulting, United States



Roberta Montafia has over 25 years of experience in the legal industry, including 13 years as an in-house legal marketer.

She has an advanced understanding of legal developments and opportunities globally, and is well versed in branding, communications, and marketing for promotion of client-facing initiatives.

Michael J. Moser, Partner O'Melveny & Meyers LLP, Hong Kong



Michael Moser acts as arbitrator and counsel and is chairman of the Hong Kong International Arbitration Centre. A partner

of O'Melveny & Myers, he divides his time between the firm's offices in Hong Kong and Beijing. He has resided in China for nearly 30 years and has acted as arbitrator, mediator, or counsel in more than 150 cases.

Terri Mottershead, Director of Professional Development Heller Ehrman LLP, United States



Terri Mottershead is the Director of Professional Development at Heller Ehrman. Her role includes supporting the training and learning requirements of the more than 700 lawyers and 900 professional staff in the firm's U.S. and international offices. She has 23 years of experience in international law practice, legal associations, consulting, legal education, and training.

Peter Murray, Chief Representative Ince & Co, China



Peter Murray has practiced maritime law for the past 30 years. His practice covers all aspects of shipping and trade.

He regularly advises on pre- and post-delivery finance for Chinese newbuildings and inward investment and assisting companies to set up in China. Mr. Murray was one of the first international arbitrators appointed to the Shanghai Arbitration Commission.

Ameet Naik, Founding and Managing Partner Naik, Naik, Iyer & Co., India



Ameet Naik is the founder and managing partner of Naik, Naik, Iyer & Co. He specializes in the areas of media and entertainment law, corporate transaction support, and arbitration. Mr. Naik has been featured in *Economic Times* for NNICO's achievement for the legal support provided to the television and film industry.

H. Gregory Nasky, Partner Goodsill Anderson Quinn & Stifel LLP, United States



Gregory Nasky represents clients in negotiating and structuring corporate, commercial, and real estate transactions, private and public financings, and regulatory compliance matters. He has served as an executive and as a director of a New York Stock Exchange company and as a director of an Australian Stock Exchange company.

Ravi Nath, Partner Rajinder Narain & Co., India



Ravi Nath is a senior partner at one of India's oldest firms. *Euromoney* and other publications have recognized him as one of

India's leading lawyers in the fields of mergers and acquisitions, aviation, asset finance, and cross-border issues. During the last 10 years he has advised on transactions in excess of US \$10 billion on cross-border asset finance and banking, aircraft finance, and leasing.

Steven C. Nelson, Partner Dorsey & Whitney LLP, Hong Kong



Steven Nelson chairs Dorsey & Whitney's Asian Practice Group and co-chairs the International Litigation & Arbitration Practice

Group. His practice includes negotiation of and advice concerning international commercial transactions, distribution and licensing agreements, joint venture agreements, and mergers and acquisitions in Europe and the Asia-Pacific Region.

Shawn C. D. Neylan, Partner
Stikeman Elliott LLP, Canada



Shawn Neylan is a partner at Stikeman Elliott, practicing competition and investment review law. He led the regulatory teams for Lakeport in its acquisition by Labatt, CVRD in its groundbreaking Canadian acquisition of Inco Limited, and Canadian Waste Services in one of the few merger cases that have been litigated in the Competition Tribunal.

James D. Nguyen, Partner
Foley & Lardner LLP, United States



James Nguyen founded and previously co-chaired Foley & Lardner's Entertainment & Media Industry Team, and is the current vice-chair of the Intellectual Property Litigation Practice. Mr. Nguyen specializes in new media and entertainment technologies. He was honored as one of the "Best Lawyers Under 40" by the National Asian Pacific American Bar Association in 2005.

Kris R. Nielsen, Chairman
The Nielsen-Wurster Group, Inc., United States



Kris Nielsen has analyzed hundreds of construction and engineering projects and testified extensively on project management, project controls, scheduling, cost damages, and other issues. Dr. Nielsen leads a variety of audits and assessments of executive and operational management process, performance, prudence, and related project-specific and corporate issues.

Susan Ning, Partner
King & Wood PRC Lawyers, China



Susan Ning is head of the International Trade Group of King & Wood. She specializes in international trade, antitrust, and foreign direct investment in China. Ms. Ning, together with her team, serves as legal counsel to the Beijing Organizing Committee for the Games of the XXIX Olympiad in 2008.

Philip T. Nunn BBS JP, Partner
Fried, Frank, Harris, Shriver & Jacobson LLP, Hong Kong



Philip Nunn is a partner at Fried Frank and head of the Litigation and International Arbitration Practice of the firm's Hong Kong office. He has extensive experience in commercial litigation and arbitration, and has been recognized by *Chambers Asia* as a leading individual in construction and dispute resolution.

Dong-Seok Oh, Partner
Kim & Chang, Korea



Dong-Seok Oh has represented clients from various jurisdictions in numerous international arbitration proceedings, predominantly under the rules of ICC, KCAB, and SIAC on matters involving international trade, corporate governance, construction, and general contractual disputes. Prior to joining Kim & Chang, Mr. Oh served as a judge in the District Court in Korea.

Ulf Ohrling, Partner
Mannheimer Swartling Advokatbyrå Ab, China



Ulf Ohrling is a partner at Mannheimer Swartling Advokatbyrå Ab, Shanghai, and specializes in mergers and acquisitions, intellectual property, IT, and foreign direct investment. Prior to joining Mannheimer Swartling, Mr. Ohrling served Service and Junior Judgeships at Swedish courts in Stockholm.

Kotaro Okamoto, Associate
Anderson Mori & Tomotsune, Japan



Kotaro Okamoto practices in the areas of tax, project finance, structured finance and other financial transactions, acquisitions, and corporate law. He has been heavily involved in various financial transactions and tax advice, in addition to significant merger and acquisition and joint venture deals.

Bert Oosting, Partner
Lovells LLP, Netherlands



Bert Oosting heads the Intellectual Property and Information Technology Group as well as the Pharmaceutical Group of the Amsterdam office of Lovells. His practice encompasses all areas of intellectual property and information technology, as well as pharmaceutical law.

Malhar S. Pagay, Partner
Pachulski Stang Ziehl & Jones LLP, United States



Malhar Pagay is a business lawyer with substantial experience representing Chapter 11 debtors, trustees, unsecured creditors, creditors' committees, and other parties in the contexts of bankruptcy cases, adversary proceedings, commercial litigation, mediations, and domestic and international business transactions.

Michael Paik, Representative Director
GlobalFluency Korea, Korea



Michael Paik is the representative director at GlobalFluency Korea. He also serves on the Board of Trustees for the Inje Foundation, as of counsel at Hanol Law Offices, and director for Venture Valuation Asia. He has been on the faculty at Yonsei University (Law) and Seoul National University (Engineering), as well as the Republic of Korea's Judicial Research & Training Institute.

SPEAKER PROFILES

D. Craig Parry, Shareholder
Parr Waddoups Brown Gee & Loveless,
United States



D. Craig Parry practices general commercial litigation with an emphasis on intellectual property litigation and agreements to license or sell IP interests. Mr. Parry's practice frequently involves matters in the Pacific Rim area. He advises and represents numerous Japanese companies doing business in the U.S., and U.S. companies doing business in Japan.

Fernando Peláez-Pier, Partner
Hoet Peláez Castillo & Duque, Venezuela



Fernando Peláez-Pier specializes in contracts, mergers and acquisitions, general counseling, patents, telecommunications, information technology and e-commerce, labor, employment and employee benefits, and litigation and alternative dispute resolution. He has also served as the director of European offices of Bomchil, Castro, Goodrich, Claro, Arosemena & Associates.

Alexander S. Polsky, Principal
JAMS, United States



Alexander Polsky is a member of JAMS and has mediated/arbitrated thousands of complex business, commercial, entertainment, employment, maritime, and catastrophic injury disputes nationwide, and conducted international arbitration under ICC and UNCITRAL. He is AV rated and has been designated as one of the top mediators/arbitrators in California by the *Daily Journal*.

Gregory W. Poulos, Partner
Cox, Wootton, Griffin, Hansen & Poulos,
LLP, United States



Gregory Poulos specializes in maritime and transportation law. His practice includes defense of personal injury and wrongful death cases in which he represents vessel owners and underwriters in maritime casualty matters. He has been involved in arbitrations and mediations throughout the U.S. and in London, and he is currently a vice-chair of the IBA's Maritime and Transport Law Committee.

Kevin Y. Qian, Partner
MWE China Law Offices, China



Kevin Qian, founding partner of MWE China Law Offices based in Shanghai, has broad experience in the areas of corporate and commercial law. Mr. Qian was nominated in 2006 by the *International Who's Who of Corporate Governance Lawyers* as one of the "World's Leading Practitioners."

Arnold M. Quittner, Of Counsel
Peitzman, Weg & Kempinsky LLP,
United States



Arnold Quittner, of counsel to Peitzman, Weg & Kempinsky, has long been recognized as one of the leading bankruptcy lawyers in the United States. His practice has focused on international insolvency matters, with an emphasis on Asia. Mr. Quittner was named a Southern California "Super Lawyer" by *Law & Politics* and *Los Angeles* magazine for 2004 and 2005.

Robert W. Quon, Partner
Fasken Martineau DuMoulin LLP, Canada



Robert Quon is a business law lawyer who specializes in corporate and commercial transactions with an emphasis on financial institutions, mergers and acquisitions, corporate reorganizations, domestic and international business investments, and commercial law in the context of aviation law. He has acted on mergers and acquisitions for several national and international clients.

Cherie S. Raidy, Partner
Foley & Lardner LLP, United States



Cherie Raidy is a member of Foley & Lardner's Real Estate, Finance & Financial Institutions, Transactional & Securities, Public Finance, and Private Equity & Venture Capital Practice Groups, and the Golf & Resort Industry Team. She works with financial institution clients on a variety of representations, including consumer financial litigation and class actions, and mortgage lending litigation cases.

Turenna Ramirez, Senior Associate
Basham, Ringe y Correa, S.C., Mexico



Turenna Ramirez represents multinational companies doing business in Mexico in matters such as customs procedures, antidumping, origin reviews, consultations on international free trade agreements, foreign trade strategic planning, and export promotion programs, and has been working closely with the World Customs Organization programs in customs facilitation and combating piracy.

**Piyanuj Ratprasatporn, Partner and Director
Tilleke & Gibbins International Ltd.,
Thailand**



Piyanuj “Lui” Ratprasatporn is a partner and director of the Commercial Department of Tilleke & Gibbins International Ltd. She has established a reputation as an expert in her practice areas and is consistently listed as a leading individual in the areas of corporate and mergers and acquisitions by *Asia Pacific Legal 500*.

**George A. Ribeiro, Partner
Vivien Chan & Co., Hong Kong**



George Ribeiro is the chief legal representative of Vivien Chan & Co.’s Shanghai office. His practice areas cover direct

China investment, technology transfer and valuation, securities, mergers and acquisitions, employment, and litigation/arbitration. Mr. Ribeiro has been identified as one of Asia’s leading lawyers in the areas of dispute resolution and intellectual property.

**April K. Rinne, Director, Business Strategy
Unitus, United States**



April Rinne is the director of business strategy for Unitus, a global microfinance accelerator. Prior to joining Unitus, Ms. Rinne

was a member of O’Melveny & Myers’ M&A, Private Equity, and Corporate Finance Practices. Ms. Rinne will be teaching law and microfinance courses for the International Development Law Organization in 2008.

**Miguel Rivero, Partner
Hoet Peláez Castillo & Duque, Venezuela**



Miguel Rivero is a senior private practicing attorney with extensive background in the Latin American oil, gas, and energy industry.

He has provided corporate legal services regarding transactions, contracts, negotiations, and litigation, and has excellent working knowledge of the differences between the U.S. common law legal system and civil law jurisdictions.

**Angus Rodger, Partner
Steptoe & Johnson LLP, United Kingdom**



Angus Rodger is a partner at Steptoe & Johnson and represents and counsels insurers, reinsurers, brokers, and financial institutions

in insurance disputes and non-contentious matters. He is identified as a leading individual by *Chambers UK* and *UK Legal 500* for insurance and reinsurance and is also ranked as a leading individual in *Chambers UK* for insurance claims.

**José Rosell, Partner
Hughes Hubbard & Reed LLP, France**



José Rosell is the head of Hughes Hubbard & Reed’s Arbitration Practice Group. He serves as a counsel and arbitrator in many

international arbitration cases, including in BIT disputes. Mr. Rosell is a former professor of international business law at the University of Paris, and a frequent speaker and author of several articles on international arbitration.

**Steven A. Rosenthal, CFE, Partner and
Director of Insurance Support Services
RGL Forensic Accountants and Consultants,
United States**



Steven Rosenthal has been involved in forensic accounting for over 35 years and is a co-founder of RGL. He has worked extensively with insurance companies and attorneys handling numerous high-profile cases, including the Exxon Valdez oil spill, MGM Grand and Hilton Hotel fires in Las Vegas, Nevada, and the World Trade Center disaster in New York.

**Neil Russ, Partner
Buddle Findlay, New Zealand**



Neil Russ is the leader of Buddle Findlay’s national taxation team. He specializes in corporate and international tax issues, as well

as structured transactions. In addition to his tax expertise, Mr. Russ has a multi-jurisdictional background in banking and capital markets transactions.

**Patrick A. Russo, Principal
The Salter Group, LLC, United States**



Patrick Russo possesses a strong background in investment banking, mergers and acquisitions, finance, valuations, and strategic

planning. Mr. Russo manages The Salter Group’s practice development efforts. Mr. Russo was previously a vice president in the Entertainment & Media Group of Houlihan Lokey Howard & Zuckin. In this capacity, he focused on investment banking and financial advisory projects.

SPEAKER PROFILES

Datuk Abdul Raman Din Saad,
Managing Partner
ARSA Lawyers (Abdul Raman Saad &
Associates), Malaysia



Datuk Abdul Raman Din Saad specializes in information technology law, M&A, cross-border transactions, and Islamic finance. He has extensive personal experience in mentoring start-ups primarily in the area of information technology and advising on management issues faced by such companies. Datuk Dr Raman sits as a judge on the Consumers' Claim Court of Malaysia.

Hiroki Saito, Partner
Mori Hamada & Matsumoto, Japan



Hiroki Saito specializes in intellectual property, technology transactions, strategic alliances, joint ventures, venture financing, and entertainment deals. He has successfully negotiated a variety of domestic and international transactions involving intellectual property, including licensing, development, and strategic alliances, as well as various corporate transactions.

Roy A. Salter, Principal
The Salter Group, LLC, United States



Roy Salter directs The Salter Group's overall practice and project management efforts. Prior to The Salter Group, Mr. Salter was a principal and managing director with the investment bank Houlihan Lokey Howard & Zukin, where he co-managed the firm's global industry group practices, including Entertainment & Media, Health Care, Telecom-Media-Technology, and Diversified Industries.

Vijaya Sampath, Group General Counsel
and Company Secretary
Bharti Enterprises Limited, India



Vijaya Sampath is the group general counsel and company secretary of Bharti Enterprises, one of India's leading business groups with interests in telecom, agribusiness, insurance, and retail. Ms. Sampath leads a team of over 60 lawyers in negotiating joint ventures, large outsourcing and commercial pioneering contracts, and high-end litigation, which also provides legal counsel to all the group companies.

Scott C. Sander, President and CEO
SightSound Technologies, United States



Scott Sander is president and CEO of SightSound Technologies, a broadband Internet media and technology company. Under his leadership, SightSound was first to electronically sell into a movie theater projection booth via the Internet for digital exhibition and first to electronically sell a movie into a handheld PocketPC.

Roger S. Saxton, Special Counsel
Nash O'Neill Tomko Lawyers, Australia



Roger Saxton is an international commercial transactions and corporate lawyer who has practiced in the United States, Japan, Sweden, and, since 1989, Australia. Best known for his work advising mining, natural resource, and energy companies, he is also well versed in advising consumer products, electronics, software, food distribution and retail, and food service retail companies.

Adam W. Schorr, Partner
Margolis & Tisman LLP, United States



Adam Schorr practices corporate law, specializing in cross-border transactions and investments, including joint ventures, mergers and acquisitions, manufacturing and supply, licensing and technology transfer, and sales and distribution in the U.S. and China. He also serves as an adjunct professor at the UCLA Law School and gives frequent talks on China-related business and legal topics.

Charles E. Schwenck, Shareholder
Greenberg Traurig, LLP, United States



Charles Schwenck co-chairs Greenberg Traurig's Energy & Natural Resources Practice Group and has over 30 years of experience in energy, infrastructure, and other commercial and industrial projects, both domestically and internationally. His industry experience includes engineering and construction, energy, mining, water supply and treatment, chemicals, transportation, and telecommunications.

William A. Scott, Partner
Stikeman Elliott LLP, Canada



William Scott is a partner in the corporate section of Stikeman Elliott. He is a senior member of the firm's Structured Finance & Financial Products Group and practices principally in the corporate finance, structured finance, derivatives, and mergers and acquisitions areas. Mr. Scott has been recognized by *Lexpert* as a "repeatedly recommended" practitioner in the Derivative Instruments sector.

Sitpah Selvaratnam, Partner
Tommy Thomas, Malaysia



Sitpah Selvaratnam is a partner at Tommy Thomas where she focuses on commercial and shipping litigation and disputes.

Ms. Selvaratnam represents diverse Malaysian and foreign corporations and commercial interests including shipowners, commodity traders, port operators, protection and indemnity clubs, insurers, and financial institutions.

James J. Sentner, Jr., Partner
Gardere Wynne Sewell LLP, United States



James Sentner has developed an international arbitration and litigation practice with a particular concentration in marine and

energy, products liability, commercial, and marine construction. He has litigated matters primarily in the areas of product liability across a broad range of industries, from medical products and consumer goods to heavy equipment and aircraft components.

Sunil Seth, Senior Partner
Seth Dua & Associates, India



Sunil Seth's professional experience spans over 17 years in advising multinational and Indian corporations on various

aspects of commercial and corporate laws including the setting-up of business operations in India through cross-border investments, joint ventures, and mergers and acquisitions.

Hamid L. Sharif, Assistant General Counsel
Asian Development Bank, Philippines



Hamid Sharif, assistant general counsel at the Asian Development Bank (ADB), heads the special practice group on Law and Policy

Reform, which is responsible for many regional initiatives, including the ADB's regional initiatives on insolvency and secured transactions. He has supervised or task-managed over 70 technical assistance projects focusing on legal and judicial reform, capacity building, and access to justice.

Edith Shih, Head Group General Counsel and Company Secretary
Hutchison Whampoa Limited, Hong Kong



Edith Shih is the head group general counsel and company secretary of Hutchison

Whampoa Limited, a Fortune 500 conglomerate based in Hong Kong operating in 55 countries engaged in the businesses of ports, property, retail, telecommunications, and oil and energy. She leads an award-winning team of over 200 legal counsels, stationed in 23 countries, overseeing all legal affairs of the entire group.

Jay Shim, Senior Foreign Legal Counsel
Yulchon Attorneys at Law, Korea



Jay Shim leads Yulchon's international tax planning and transactions practice. He primarily practices in the areas

of international taxation, corporate/M&A, foreign investment, and finance law. Prior to joining Yulchon, Mr. Shim was an international tax partner at global accounting firms in the U.S., Russia, and Korea.

Krishan Singhania, Proprietor
Singhanian & Co., India



Krishan Singhania has provided extensive legal expertise in the areas of corporate and commercial law, arbitration, and

aviation law to national and international clients around the globe. He is a frequent lecturer on Indian law and regulation in international conferences and forums, and the current IPBA Jurisdiction Council Member for India.

Barry H. Smith, Partner
Reed Smith LLP, United Kingdom



Barry Smith, a partner in Reed Smith's Advertising, Technology & Media Group, specializes in a wide range of transactional issues

covering all aspects of the media and entertainment industries with particular reference to film and television finance, production, and distribution. Mr. Smith has expertise in all financial production and distribution issues arising in media transactions.

Soon Moo Soh, Partner
Yulchon Attorneys at Law, Korea



Soon Moo Soh is the head of Yulchon's Tax Practice Group and specializes in taxation and litigation. Prior to joining Yulchon

in 2000, Mr. Soh served as a judge for 20 years, which includes his position as the senior research judge of the Supreme Court of Korea. He has recently been selected as "today's best lawyer in taxation" by the *Chosun Ilbo*, a renowned newspaper in Korea.

Gary K. L. Soo, Barrister-at-Law
Gary Soo's Chambers, Hong Kong



Gary Soo practices in the area of civil litigation involving commercial and construction disputes and arbitration. He is

the co-author of *Construction Law and Practice in Hong Kong* and a contributing editor of *Arbitration in Hong Kong: A Practical Guide*.

SPEAKER PROFILES

Cliff Sosnow, Partner

Blake, Cassels & Graydon LLP, Canada



Cliff Sosnow specializes in international trade, commodity tax and customs, China practice, international, and procurement

law. He is recognized in *The Canadian Legal Lexpert Directory* as a leading practitioner in international trade regulation, and is recommended in *Chambers Global* as a leading practitioner in WTO/international trade.

James Sprayregen, Managing Director

Goldman Sachs, United States



James Sprayregen, prior to joining Goldman Sachs as a managing director, served as one of the nation's top bankruptcy lawyers for Kirkland & Ellis. Mr. Sprayregen was the lead lawyer for United Airlines, which emerged from its three-year stay in Chapter 11 in 2006. Other bankruptcies he has handled include Consecro, TWA, Tower Automotive, NRG Energy, and Fleming Companies.

Santiago J. Sturla, Partner

Allende & Brea Abogados, Argentina



Santiago Sturla is a partner at Allende & Brea Abogados, and specializes in corporate law and finance law. He has advised clients in a broad range of matters, including general corporate law, commercial agreements, mergers and acquisitions, financing and restructuring, foreign investment and political risk insurance, banking, insurance, high technology, and commercial litigation.

M. Kenneth Suddleson, Of Counsel

Foley & Lardner LLP, United States



Kenneth Suddleson is of counsel at Foley & Lardner and is a member of the firm's Entertainment & Media Group.

He represents clients engaged in all facets of the entertainment industry and related businesses worldwide. Mr. Suddleson has been recognized as one of the top attorneys in entertainment and sports by *Southern California Super Lawyers*.

Priti Suri, Proprietor

Priti Suri & Associates Legal Counsellors, India



With a general corporate background, Priti Suri has two decades of experience in three continents in commercial law, M&A, and a variety of cross-border transactions. She has acted as lead counsel, representing start-ups and conglomerates with deal values ranging from US \$10 million to US \$900 million. She has authored two books on open source and FDI.

Eusebio V. Tan, Senior Partner

Angara Abello Concepcion Regala & Cruz, Philippines



Eusebio Tan is the managing partner at Angara Abello Concepcion Regala & Cruz. He has advised senior management, boards of directors, independent committees of boards, and major stockholders of both public and private corporations on strategies to be applied in major transactions and projects and in the implementation thereof.

Joyce A. Tan, Managing Partner

Joyce A. Tan & Partners, Singapore



Joyce Tan is a corporate commercial lawyer with particular focus on technology, communications, media, and intellectual property. Her extensive practice has led her to serve clients from numerous industries including government bodies and multinational corporations.

Sylvette Y. Tankiang, Senior Partner

Villaraza & Angangco, Philippines



Sylvette Tankiang heads Villaraza & Angangco's Tax Group and has extensive experience in matters involving the application of laws relating to taxation, banking, finance, securities, and e-commerce. Her practice areas include corporate and business law, banking and finance, corporate reorganization, e-commerce and IT, taxation, and mergers and acquisitions.

Hiroyuki Tezuka, Partner

Nishimura & Asahi, Japan



Hiroyuki Tezuka specializes in M&A, international transactions, civil and commercial disputes, transnational dispute settlement, international trade, and telecommunications and media. He was named as one of the world's leading commercial arbitration lawyers by *International Who's Who of Business Lawyers* in 2007.

Christopher L. Thomas, Partner
Holland & Hart LLP, United States



Christopher Thomas manages Holland & Hart's Immigration Practice Group and has extensive experience in employment-based immigration law. He advises and represents companies in the preparation of employment-based nonimmigrant petitions, labor certification applications, immigrant petitions, and adjustment of status and consular processing applications.

Matthew C. Thompson, Partner
Stroock & Stroock & Lavan LLP, United States



Matthew Thompson is a partner in the Corporate Group and Entertainment Group at Stroock & Stroock & Lavan. He has a wide-ranging corporate entertainment practice representing studios, networks, financial institutions, equity investors, completion guarantors, distributors, sales agents, producers, directors, writers, and actors.

John B. Tieder, Senior Partner
Watt, Tieder, Hoffar & Fitzgerald, L.L.P., United States



John Tieder concentrates his practice on major construction matters with a particular emphasis on international projects. He is involved in advising clients on a broad range of issues related to the construction of major infrastructure throughout the world and represents foreign governments, utilities, oil companies, and U.S. and international contractors.

Gary P. Tober, Shareholder
Lane Powell PC, United States



Gary Tober practices in the areas of tax and business planning for U.S. and foreign corporations, partnerships, and individuals. He represents clients involved in cross-border business operations and investment transactions in a number of industries including technology, manufacturing, service, fisheries, and horticultural.

Harumichi Uchida, Senior Partner
Mori Hamada & Matsumoto, Japan



Harumichi Uchida is a senior partner at Mori Hamada & Matsumoto. Mr. Uchida specializes in corporate and commercial matters, with particular focus on mergers and acquisitions, intellectual property, media, telecommunications, antitrust, and international arbitration. He is vice president of the Japan Competition Law Forum and a member of the Round Table Conference of the Japan Fair Trade Commission.

Hajime Ueno, Senior Associate
Nishimura & Asahi, Japan



Hajime Ueno, senior associate in Nishimura & Asahi's Financial Services Group, has an extensive practice in corporate finance and capital markets with an emphasis on structured finance transactions. He has represented arrangers in aircraft and airline tickets securitization transactions as well as various asset-based transactions.

Lawrence Ulman, Partner
Gibson Dunn & Crutcher LLP, United States



Lawrence Ulman is the co-chair of Gibson Dunn's Media and Entertainment Practice Group. Mr. Ulman specializes in entertainment finance. He regularly represents film studios in their film distribution and financial matters, and banks providing production financing for theatrical motion pictures. His clients include Universal Pictures, New Line Cinema, Twentieth Century Fox, and Constantin Film.

Dennis Unkovic, Partner
Meyer, Unkovic & Scott LLP, United States



Dennis Unkovic is a partner at Meyer, Unkovic & Scott. He provides counsel to U.S. companies as well as foreign entities and investors, and is actively involved in negotiating commercial transactions such as acquisitions, divestitures, strategic alliances, joint ventures, mergers, and restructuring to enhance effectiveness. He also has extensive experience in handling complex international legal transactions.

Mahesh Uttamchandani, Senior Counsel
The World Bank, United States



Mahesh Uttamchandani is Senior Counsel for Insolvency & Creditors' Rights at the World Bank and head of the World Bank's Global Insolvency & Creditors' Rights Initiative. Mr. Uttamchandani provides advisory services to governments around the world on the subject of insolvency and creditor rights. Mr. Uttamchandani is considered a leading authority on global insolvency systems.

Stuart Valentine, Partner
Mallesons Stephen Jaques, Hong Kong



Stuart Valentine advises on corporate and commercial matters, including mergers and acquisitions and business regulation, with a particular focus on cross-border transactions involving China. He has been recommended as a "leading lawyer" in the corporate, commercial, and mergers and acquisition fields in China and Hong Kong in various legal directories.

SPEAKER PROFILES

Gerhard Wegen, Partner Gleiss Lutz, Germany



Gerhard Wegen is a senior partner in the Stuttgart office of Gleiss Lutz. He has been an honorary professor at the

University of Tübingen since 1997, and has been teaching international economic law there since 1989. He has published widely in his fields of expertise, namely M&A/ corporate and international arbitration.

Steven J. Weisz, Partner Blake, Cassels & Graydon LLP, Canada



Steven Weisz is a partner in the Restructuring & Insolvency Group. He is responsible for the development of the group's

mid-market practice and has extensive experience in a variety of litigation matters relating to insolvency, bankruptcy, commercial fraud, and general commercial and priority disputes, including disputes arising from equipment and inventory financing.

John N. West QC, Barrister-at-Law Selborne Chambers, Australia



John West QC has practiced as a barrister throughout Australia and in Papua New Guinea since 1975. He was appointed

Queen's Counsel in 1989 and specializes in commercial and equity cases as well as labor law and administrative law. Mr. West also practices as an arbitrator and mediator in commercial law and labor law matters.

Enny Widhya, Partner Mochtar Karuwin Komar, Indonesia



Enny Widhya specializes in aviation finance and leasing and has represented aircraft lessors, owners, and banks in lease

and finance transactions from the U.S. and Europe. She spoke at a seminar in 2006 on the Communication of the Protocols to the Convention on International Interests in Mobile Equipment in Matters Specific to Aircraft Equipment under the auspices of the DGAC.

Brad Wylynko, Partner Clayton Utz, Australia



Brad Wylynko is an international environment lawyer who leads Clayton Utz's Western Australian Environment & Planning Practice

Group. He has extensive experience advising national and international energy, resource, industrial, property, finance, and manufacturing companies in both Canada and Australia. Mr. Wylynko is ranked as a leading lawyer in the Environment Section of *Chambers Global* in 2007.

Shuji Yamaguchi, Partner Okabe & Yamaguchi, Japan



Shuji Yamaguchi specializes in maritime, insurance, reinsurance, litigation, and aviation law.

He serves as a legal advisor to the Japan International Freight Forwarders Association and the Japan Air Cargo Forwarders Association, and has co-authored *Arrest of Ship, Japan Civil Law Code Vol. 1*, and *Guide Book of International Multimodal Transportation*.

Sky Yang, Partner Bae, Kim & Lee LLC, Korea



Sky Yang is a partner at Bae, Kim & Lee and specializes in mergers and acquisitions, corporate finance, financial

regulations, and corporate law practice. Mr. Yang also serves as an advisor on the Advisory Network Committee, Bank Supervision Department, Financial Supervisory Service, and the Investment and Fund Deliberation Commissioner of the Korea Airports Corporation.

Alvin Yeo, Senior Counsel and Senior Partner WongPartnership, Singapore



Alvin Yeo specializes in banking and corporate disputes, insolvency and restructuring, and construction and civil engineering

matters. He has extensive experience in litigation and arbitration proceedings both in Singapore and in the region including Malaysia, Thailand, Indonesia, and Brunei. He is recognized as a leading lawyer in *ILFR1000*.

Jon W. Zinke, Partner Keesal, Young & Logan, Hong Kong



Jon Zinke is a resident partner at Keesal, Young & Logan's Hong Kong office. He provides advice

to the firm's clients in the Far East regarding various maritime, aviation, and commercial disputes involving United States law and provides advice and assistance to law firms throughout the United States on matters involving Asia.

James Zukin, Senior Managing Director Houlihan Lokey Howard & Zukin, United States



James Zukin is the Chairman of Asia and founding member of the Board of Directors of Houlihan Lokey Howard & Zukin, where

he spearheads the firm's emerging market strategy. Mr. Zukin often presents on Chinese M&A and restructuring issues to various Chinese officials.

IPBA 2008 ANNUAL CONFERENCE REGISTRATION FORM

Please print clearly or type this form and keep a photocopy for your records. You may submit the form via postal mail, fax, or email, or register online at www.ipba2008.com. Registrations received on or after April 19, 2008 will be subject to on-site registration pricing.

IPBA 2008 Annual Conference
10920 Wilshire Boulevard, Suite 150-9128
Los Angeles, CA 90024
United States of America
T: +1.310.478.0170 | F: +1.310.474.7687
Email: info@ipba2008.com | Website: www.ipba2008.com

FOR OFFICIAL USE ONLY

Date Processed _____
Processed By _____
Payment Received _____
Notes _____

Delegate and Accompanying Person Contact Information

Delegate

Title ☐ Mr. ☐ Mrs. ☐ Ms. ☐ Dr. ☐ Other (Please Specify) _____
Given Name / First Name _____ Surname / Last Name _____
Firm / Organization _____ Job Title / Position _____
Address _____
City _____ State / Province _____
Zip / Postal Code _____ Country _____
Telephone _____ Mobile Phone _____
Fax _____ Email _____
Website _____

Accompanying Person

Title ☐ Mr. ☐ Mrs. ☐ Ms. ☐ Dr. ☐ Other (Please Specify) _____
Given Name / First Name _____ Surname / Last Name _____

Emergency Contact Information

Name _____
Phone _____
Email _____

Letter of Invitation

Please review the travel information section on page 30 for visa-related information. If you require a letter of invitation in order to obtain a visa to enter the United States to attend the Conference, please check this box. ☐

Privacy

Delegate contact information will be included in the list of participants circulated at the Conference and displayed on the IPBA Conference website. If you would like your information omitted from this list, please check this box. ☐

Special Needs and/or Dietary Requests

Terms and Conditions

The services specified in the descriptions of accompanying person and pre/post Conference tours and activities are available as of December 15, 2007. In the event that any tour or activity becomes unavailable for any reason, every effort will be made to provide alternative services of equivalent standard and value. However, neither the IPBA, IPBA 2008 Annual Conference, Inc., nor the Conference Executive Producer can accept any responsibility for failure to provide the specified tours and activities. By registering for the IPBA 2008 Annual Conference, you acknowledge that neither the IPBA, IPBA 2008 Annual Conference, Inc., nor the Conference Executive Producer is liable for any personal injury or damage to or loss of personal property suffered or incurred before, during, or after the Conference.

IPBA 2008 ANNUAL CONFERENCE REGISTRATION FORM

Registration and Program Fees

Section A: Delegate and Accompanying Person Registration Fees

Category	Early Bird ¹	Regular ²	On-Site ³	Amount
IPBA Member	US \$1,450	US \$1,625	US \$1,750	US \$
Non-IPBA Member	US \$1,650	US \$1,825	US \$1,950	US \$
Young Lawyer Member ⁴	US \$1,250	US \$1,400	US \$1,500	US \$
Accompanying Person	US \$875	US \$1,000	US \$1,100	US \$
			Subtotal A:	US \$

Section B: Accompanying Person Program Fees⁵

Date	Tour/Activity	Fees	Amount
Monday, April 28, 2008, 9:30 AM – 4:00 PM	Weisman Art Foundation and Rodeo Drive Tour ⁶	US \$235/person	US \$
Monday, April 28, 2008, 9:30 AM – 4:00 PM	Los Angeles Fashion District Tour ⁶	US \$235/person	US \$
Tuesday, April 29, 2008, 9:00 AM – 4:00 PM	Huntington Library and Botanical Gardens Tour	US \$195/person	US \$
Wednesday, April 30, 2008, 8:30 AM – 9:15 AM	U.S. University Admissions Presentation	Complimentary	Complimentary
Wednesday, April 30, 2008, 9:30 AM – 4:30 PM	LivingHomes and the Getty Villa Tour ⁷	US \$185/person	US \$
		Subtotal B:	US \$

Section C: Pre/Post Conference Program Fees⁸

Date	Tour/Activity	# Persons	Fees	Amount
Sunday, April 27, 2008, 10:00 AM – 3:00 PM	Los Angeles in a Day Tour		US \$185/person	US \$
Sunday, April 27, 2008, 10:00 AM – 3:00 PM	California Beach Tour		US \$185/person	US \$
Sunday, April 27, 2008, 12:00 PM – 3:00 PM	Celebrity Homes Tour		US \$160/person	US \$
Wednesday, April 30, 2008, 6:30 PM – 11:00 PM	The Magic Castle Dinner and Show		US \$235/person	US \$
Thursday, May 1, 2008, 8:00 AM – 3:00 PM	Annual IPBA Golf Tournament		US \$375/person	US \$
Thursday, May 1, 2008, 10:00 AM – 3:00 PM	Los Angeles in a Day Tour		US \$185/person	US \$
Thursday, May 1, 2008, 10:00 AM – 1:00 PM	Celebrity Homes Tour		US \$160/person	US \$
Thursday, May 1, 2008, 8:30 AM – 6:30 PM	Santa Barbara Wine Tour		US \$260/person	US \$
Thursday, May 1, 2008, 8:30 AM – 6:30 PM	Catalina Island Day Tour		US \$235/person	US \$
Thursday, May 1, 2008 – Sunday, May 4, 2008	Las Vegas Weekend Trip		US \$1,500/person US \$1,900/couple	US \$
Friday, May 2, 2008 – Monday, May 5, 2008	Hawaii Weekend Trip		US \$1,400/person US \$1,800/couple	US \$
			Subtotal C:	US \$

Section D: Total Fees

Subtotal	Section	Amount
Subtotal A	Delegate and Accompanying Person Registration Fees	US \$
Subtotal B	Accompanying Person Program Fees	US \$
Subtotal C	Pre/Post Conference Program Fees	US \$
		Total Fees Enclosed: US \$

¹ For registrations received on or before February 29, 2008, early bird registration pricing will apply.

² For registrations received between March 1, 2008, and April 18, 2008, regular registration pricing will apply.

³ For registrations received on or after April 19, 2008, on-site registration pricing will apply.

⁴ Maximum age for young lawyers is 30 years old on April 27, 2008. Please enclose a copy of your passport or other ID for certification with this registration form.

⁵ The tours and activities listed in the Accompanying Person Program are offered only to those accompanying persons who have registered for the Conference and paid the registration fees outlined in Section A. The Accompanying Person Program tours and activities are not included in the registration fee for accompanying persons. For an accompanying person to participate in these tours and activities, please complete Section B.

⁶ Limit 30. Registrations will be accepted on a first-come, first-served basis. If upon receipt of the registration form the selected tour is full, the accompanying person will be automatically registered for the alternative tour on Monday, April 28, 2008.

⁷ Limit 100. Registrations will be accepted on a first-come, first-served basis.

⁸ The tours and activities listed in the Pre/Post Conference Program are offered only to those delegates and accompanying persons who have registered for the Conference and paid the registration fees outlined in Section A. The Pre/Post Conference Program tours and activities are not included in the registration fee for delegates or accompanying persons. To participate in these tours and activities, please complete Section C. All Pre/Post Conference tours and activities are subject to availability and will be booked on a first-come, first-served basis.

IPBA 2008 ANNUAL CONFERENCE REGISTRATION FORM

Payment of Fees

Method of Payment (Check one)

☐ Visa ☐ MasterCard ☐ American Express ☐ JCB ☐ Check ☐ Wire Transfer

Name As It Appears On Your Credit Card _____

Credit Card Number _____ Expiration Date _____

Billing Address _____

City _____ State / Province _____

Zip / Postal Code _____ Country _____

By completing this credit card form, you agree to make payment according to the card issuer agreement. Credit card transactions will appear on your statement as "THR* IPBA Event Registration". Registration is guaranteed only upon receipt of full payment.

All bank draft checks must be made in U.S. dollars only and be drawn on a U.S. bank. Checks should be made payable to *IPBA 2008 Annual Conference, Inc.* and the delegate's name should be listed in the memo section of the check. When paying by wire transfer, please contact the Conference Executive Producer via email at info@ipba2008.com to confirm the completion of the transfer.

Bank Information

Bank Name: U.S. Bank
Branch #: 3036
633 West 5th Street, 29th Floor
Los Angeles, CA 90071
United States of America

Account Information

Beneficiary's Name: IPBA 2008 Annual Conference, Inc.
Beneficiary's Account #: 1534-5963-1914
Routing #/ABA: 122235821
SWIFT: USBKUS44IMT

Cancellation and Refund Schedule

A 50% refund will be made for cancellations made in writing and received by the Conference Executive Producer on or before March 15, 2008. After March 15, 2008, registration and program fees are nonrefundable. Registration and program entitlements may be transferred to another individual upon written request submitted to the Conference Executive Producer on or before April 18, 2008.

Accommodations and Travel

How to Book Accommodations and Airport Transfers

To reserve your hotel accommodations, please contact Hyatt Regency Century Plaza Reservations at 1.800.233.1234 for U.S. callers and at +1.310.228.1234 for international callers, and mention the IPBA 2008 Annual Conference. You may also book your reservation online by visiting www.centuryplaza.hyatt.com/groupbooking/laxcpipba2008. To guarantee room availability, please make your reservation before March 31, 2008. To arrange airport transfers, please contact the Hyatt Regency Century Plaza concierge at +1.310.551.3301.

Arrival / Departure

Please provide your estimated date of arrival:

- ☐ Friday, April 25, 2008
☐ Saturday, April 26, 2008
☐ Sunday, April 27, 2008
☐ Other (Please Specify) _____

Please provide your estimated date of departure:

- ☐ Wednesday, April 30, 2008
☐ Thursday, May 1, 2008
☐ Friday, May 2, 2008
☐ Other (Please Specify) _____

IPBA 2008 ANNUAL CONFERENCE REGISTRATION FORM

Delegate Educational Program

Please check the box of the educational sessions you are interested in attending. (Check all that apply.)

Monday, April 28, 2008

1:15 PM – 2:45 PM

- ☐ Go West, Good Investor, Go West...to the West Coast [Part 1]
- ☐ Getting into Business in China: Legal Issues in Establishing Business Entities
- ☐ Expediting the Dispute Resolution Process in Major Construction Projects
- ☐ The Historic Cape Town Treaty and Its Implications in Aircraft Financing
- ☐ Maritime Law: A Mock Mediation
Presented in Cooperation with the International Bar Association (IBA)

3:15 PM – 4:45 PM

- ☐ Go West, Good Investor, Go West...to the West Coast [Part 2]
- ☐ Getting Out of Trouble in China: Effective Legal Solutions for Major Business Disputes
- ☐ Microfinance: Moving Beyond Philanthropy
- ☐ Living with Emboldened Tax Authorities: International Trends in Tax Investigations and Audits
- ☐ Asia-Pacific Antitrust Law: Redefining the Rules of Engagement
Presented in Cooperation with the Sections of International and Antitrust Law of the American Bar Association (ABA)

Tuesday, April 29, 2008

9:00 AM – 10:30 AM

- ☐ M&A Execution in China: What Every Deal Team Needs to Know
- ☐ Crossing the Divide: Current Trends in International Licensing
- ☐ Emissions Trading: We're Getting Warmer
- ☐ The Quest for Work-Life Balance in Legal Practice: The Essential Challenge and the Path to Integration [Part 1]
- ☐ The Evolving Balance of Trade and Its Effect on World Shipping and the Practice of Maritime Law

11:00 AM – 12:30 PM

- ☐ M&A Due Diligence in Asia: Trends and Strategies
- ☐ Representing Asian Clients in High-Stakes U.S. Jury Trials
- ☐ Large-Scale Railway Projects: Mitigating the Risks
- ☐ The Quest for Work-Life Balance in Legal Practice: The Essential Challenge and the Path to Integration [Part 2]
- ☐ Globalization and the Transformation of the Legal Profession in Asia: Cause or Effect?

Tuesday, April 29, 2008

1:45 PM – 3:15 PM

- ☐ Using Trade Agreements to Do Business in Brazil, Chile, and Mexico: A Latin American Approach
- ☐ Collapsing Boundaries: Technology, Communications, and Entertainment Delivery [Part 1]
- ☐ The Rise of Islamic Finance
- ☐ Tax Equalization Policies and Benefits Affecting Today's Global Executive
- ☐ Balancing Interests: Insolvency Reform in the Asia-Pacific Region [Part 1]

3:45 PM – 5:15 PM

- ☐ Bilateral Investment Treaties: Lessons Learned from the Latin American Experience
- ☐ Collapsing Boundaries: Technology, Communications, and Entertainment Delivery [Part 2]
- ☐ Airport Infrastructure and the Aviation Industry: Tackling the Legal Issues
- ☐ Workers Without Borders: The Age of the Global Employee
- ☐ Balancing Interests: Insolvency Reform in the Asia-Pacific Region [Part 2]

Wednesday, April 30, 2008

9:00 AM – 10:30 AM

- ☐ The Global Investment Race for Energy and Resources [Part 1]
- ☐ Filling the Pipeline: Cutting-Edge Techniques for Getting and Keeping Your Clients [Part 1]
- ☐ Raising Money in the Entertainment Industry: An Overview of Innovative Financing Vehicles
- ☐ Dealing with a Failed International Construction Project: A Case Study

11:00 AM – 12:30 PM

- ☐ The Global Investment Race for Energy and Resources [Part 2]
- ☐ Filling the Pipeline: Cutting-Edge Techniques for Getting and Keeping Your Clients [Part 2]
- ☐ Raising Money in the Entertainment Industry: Intellectual Property Rights as Deal Collateral
- ☐ Commercial Arbitration in Asia Today: Are the Courts Hands On or Hands Off?
- ☐ Cross-Border Pollution: Critical Success Factors for Protecting Clients

1:30 PM – 3:00 PM

- ☐ Corporate Counsel Forum
Presented in Cooperation with the Association of Corporate Counsel (ACC)

MANY BORDERS. ONE WORLD.TM
WWW.IPBA2008.COM

IPBA 2008 Annual Conference
10920 Wilshire Boulevard, Suite 150-9128
Los Angeles, CA 90024
United States of America
T. +1.310.478.0170
F. +1.310.474.7687
Email: info@ipba2008.com
Website: www.ipba2008.com

Printed by Southern California Graphics, a platinum sponsor of the IPBA 2008 Annual Conference.